



“Rebalancing Streets for People”

Gwen Shaw and Jeremy Chrzan, Toole Design

Wednesday, April 8, 12pm-1pm

TOOLE
DESIGN

Quick Build Webinar Agenda

1. What is Quick Build?
2. Introduction to MTC Goals
3. Consultant Presentation
4. Moderated Q&A
5. Please fill out Survey Link



What is “Quick Build”?

- 1** REVERSIBLE, ADJUSTABLE AND/OR TEMPORARY TRAFFIC SAFETY IMPROVEMENTS
- 2** INCREMENTAL, LOW-COST, RAPID INSTALLATION
- 3** BUILDABLE WITHIN DAYS, WEEKS, MONTHS (DEMO, PILOT, INTERIM)
- 4** DESIGN TESTING AND PROTOTYPING: CAN BE UNDONE!



Bike NWA Pilot Projects; Bella Vista, Rogers, and Bentonville, AR



Public Plaza and Parking Lot Access Improvements, Santa Monica



Quick Build Webinar Goals

- **Initiate discussions** on how this method can **enhance social distancing** in all neighborhoods in the Bay Area
- Support **quick build** as a **project delivery method**
- Introduce **best practices**



Quick Build Webinar Goals

- Facilitate conversations with **local agencies**
- Acknowledge that City staff are **resource-constrained** right now during this **public health** crisis
- Conduct a **survey for needs assessment**

27th Street, City of Oakland, CA



Introducing Toole Design Group



Gwen Shaw



Jeremy Chrzan



Rebalancing Streets for People

TOOLE
DESIGN



Credit: Sergio Ruiz, flickr



Credit: AFP via Getty Images

Introduction

Zoom Webinar Chat

From Me to [All panelists and attendees](#):
Hello everyone! Here is a similar example of what we did in our city:

To: [All panelists and attendees](#)

Your text can be seen by panelists and other attendees

What is the best thing cities can do right now to help?

Send anonymously

Cancel Send

Chat Raise Hand Q&A

Equity, Ethics, and Empathy

1930s 1940s 1950s 1960s 1970s 1980s 1990s 2000s 2010s

Sadly, during the last 100 years, people have become an afterthought.



It's time for change.

San Francisco Bay Area Air Pollutant Levels

Weekdays, March 9-20
Percentage change in 2020 vs. 2017-2019 averages

March 2020



DATA SOURCE: AQMIS





Climbing or Sitting
the Rocks is Strictly
Prohibited

CAUTION
PRECAUCIÓN

Riding A Bike - *Not Cancelled*

Taking Hikes - *Not Cancelled*

Walking The Dog - *Not Cancelled*

Chalking Your Sidewalk - *Not Cancelled*

Enjoying The Breeze - *Not Cancelled*

Watching A Sunset - *Not Cancelled*

**Let's embrace what we
can do *Outdoors***





Toujours

Be Compassion





301-634-2379

Discovery →

NO TURN ON RED

Disco

THRU
↑
CYCLE
OBEDIENCE
TRAFFIC
SIGNAL

SPEED
LIMIT
30

SNOW
EMERGENCY
ROUTE

↑
BICYCLE
WALKER

FOR LEA
301 287 99

Minneapolis Park and Recreation Board announces riverfront parkway and road closures to help trail users maintain social distancing

West River Parkway closes between Plymouth Avenue and 11 Avenue S, one lane remains open to provide access to Stone Arch Bridge Parking Lot and 200 2nd St. S; Main Street SE closes between Hennepin Avenue and 3rd Avenue SE, one lane remains open between 3rd and 6th Avenues.



After too many people failed at social distancing over the weekend, Los Angeles County Parks and Recreation trails are being shut down, LA County Supervisor Kathryn Barger announced Monday.



A Chicago police officer blocks the road to the Adler Planetarium along Lake Michigan Thursday, March 26, 2020, in Chicago. On Thursday morning, Chicago Police began turning joggers and others away from the city's lakefront trails amid fears of the spread of the coronavirus, hours after Mayor Lori Lightfoot threatened to shut them down if people would not stop crowding the areas. (AP Photo/Charles Rex Arbogast) THE ASSOCIATED PRESS



Daniel Paschall
@raschall



Thank you [@bcgp](#) and [@PhillyOTIS](#) for providing much needed breathing room in Philly on MLK Drive!



Honkyrulespools
@honkyrulespools



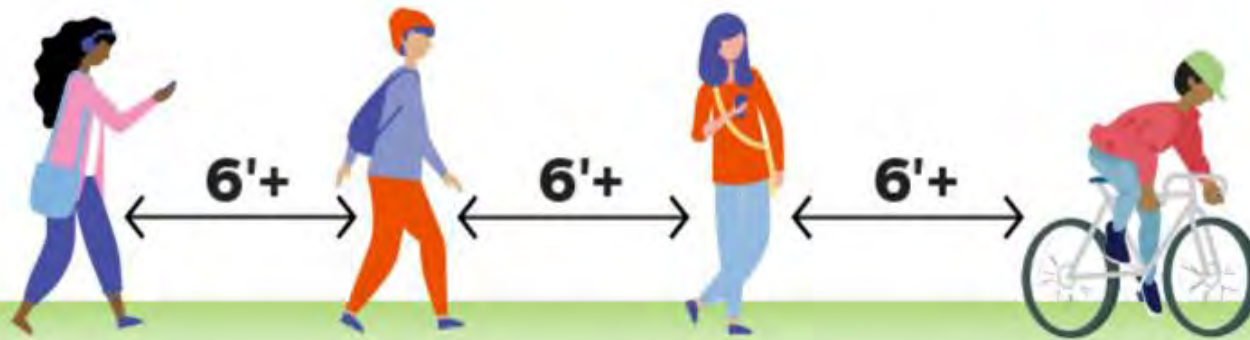
Replying to [@stolte4ward4](#) [@Chris_Ariens](#) and 2 others

I am sure city staff resources are limited. Not sure if this is a priority

March 28, 2020

COVID-19: Be Smart. Do Your Part.

Sligo Creek Parkway • April, Friday to Sunday
Piney Branch Road to New Hampshire Avenue
Closed to vehicles • Open for pedestrians



Respect the Radius:
Keep six feet or more
between you and others
at all times.

MontgomeryParks.org



Traffic Data Implications

- Traffic volumes are down
 - 30% drop in VMT in Bay Area
 - Peak hour volumes even lower
- Speeding is up
- Bike crashes (in NYC) up 43% though motorist and pedestrian crashes down across the country

SPEED DEMONS: The Scourge of Reckless Driving is Way Worse Than We Thought

By Gersh Kuntzman | Apr 5, 2020 | 27 COMMENTS



People are driving recklessly. Photo: Gersh Kuntzman



Bill Schultheiss @schlthss · Mar 27

People are walking in the streets because our society gave too much space to cars leaving sidewalks too narrow...it is time to take that space back.

[@tooledesign](#) [@SmartGrowthUSA](#)



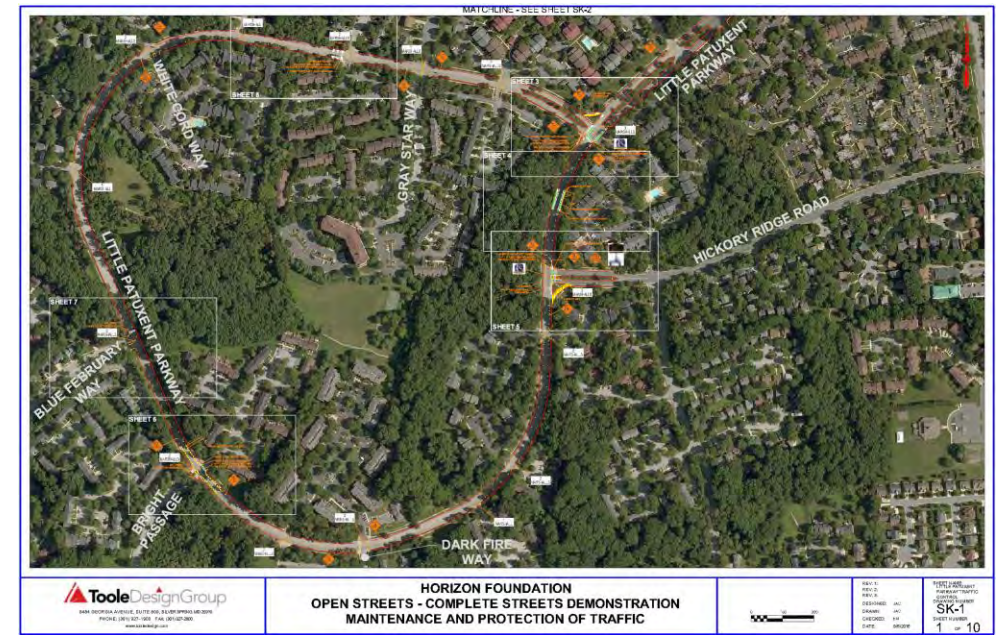
Lane Closures – Ideas & Considerations

- 4-lane roads can be reduced to 2-lane roads in the current pandemic
- Where retail is closed, can repurpose parking lanes
- Identify your inventory of existing cones, barrels, posts, or on-call contracts to supply materials
- Helps to keep vehicle speeds lower



Lane Closures – Ideas & Considerations

- Consider at stores where people queuing on the sidewalk force people walking into the street
- Consider pop-up event locations and where you frequently do lane closures



Lower Volume Streets – Local Traffic Only

Ideas & Considerations

- Prioritized for people walking and biking
- Minimal cones or barricades
 - Potential for DIY closures with online permitting
- Maintain access for local trips
- An important strategy where sidewalks are narrow and parking will not be removed



Jonathan Fertig @rightlegpegged · 42m

"The only conflict that anyone has noticed in the 48 hours or so the roads have been closed to cars has been pedestrians yelling at drivers who they believe are not complying w/ the road closure signs."
I watched a dad pushing a stroller chew out a driver



Denver's closed streets bring out people eager to break coronavirus qu...
Street closures were put into place Saturday as a way of providing some relief to city parks that are getting heavy use from urban dwellers ...
[denverpost.com](#)

Transit Access Ideas & Considerations

- Maintain linkages and access to Transit
- Consider pedestrian desire lines to transit and those street conditions

Starting Wed., 4/8, #SFMuni service will be reduced to 17 core lines. This core network will provide essential service within one mile of all San Franciscans, as we continue to serve medical facilities & other essential trips. For more information, visit bddy.me/2Jlw0WT



Find opportunities for parallel routes

Ideas & Considerations

- Many paths are too narrow for mixed pedestrian and bicycle traffic
- Attempt to separate bicyclists and pedestrians using lane closures



No Push Buttons Ideas & Considerations

- Put signals on pedestrian recall



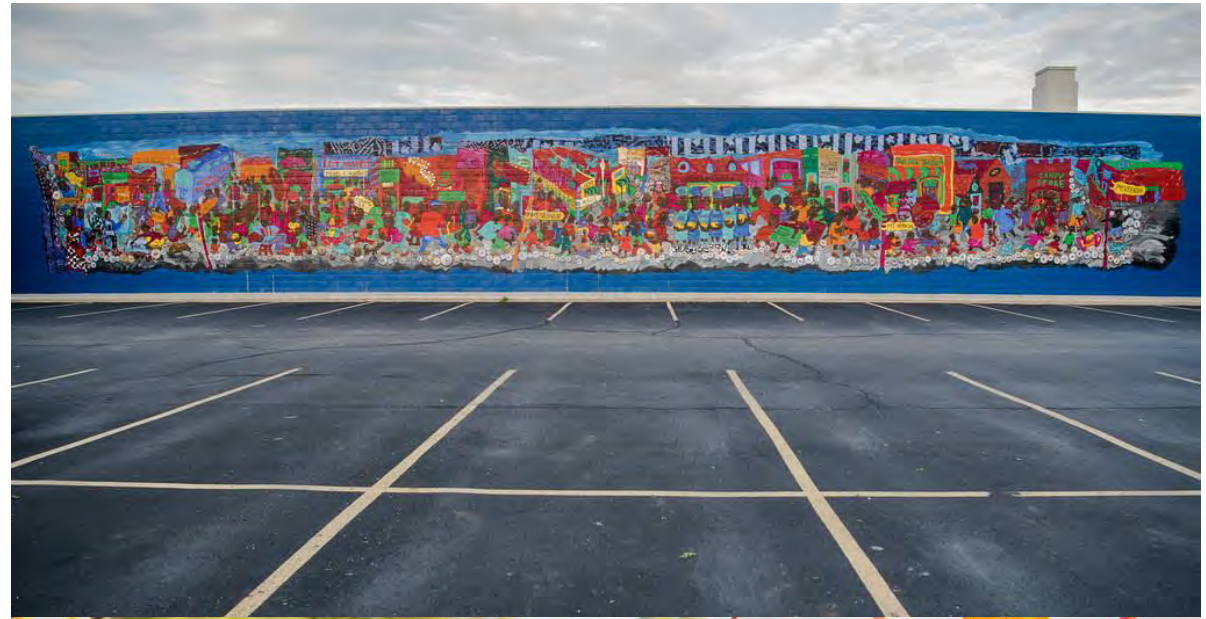
Other Signalization Ideas & Considerations

- Consider nighttime signal timing (shorter cycle lengths)
- Ensure that signals are not placed in flash
- Adjust signal timing for slower speed progression along active transportation routes



Some other ideas?

- Move on-street parking to existing lots and garages to make space for walking
- Reduce speeds through 'work zones'



Planning Considerations & Messaging

- Routes aren't destinations
 - intended to provide space to move, not gather
- Consider localized loops with the messaging that 1 loop is a 30-minute walk and 4 loops is a 30-minute bike ride @ 12mph
- Consider access to essential services
- Providing active transportation routes can provide space for people to disperse in parks



REUTERS

Planning Considerations and Messaging

- Rebalance the Park Frontage Roads
- Communicate the purpose and intended operations
 - Light exercise, not time trials
 - Consider space for pedestrians



Planning Considerations & Messaging

- Consider inequities
 - lower income neighborhoods less like to have yards, parking within walking distances, or tree-lined street
- Ensure active transportation routes are provided in lower income neighborhoods



Messaging

- Think about phases of implementation, but need at least basic routes for all communities
- Provide guidance
- Seek feedback
 - hashtags to help monitor usage and identify needed changes



Minneapolis Park & Recreation Board

DON'T PUT OTHERS AT RISK	STAY 6 FEET APART
No pongas a otros en riesgo	Manténgase a 6 pies de distancia
Tsis txhob ua rau lwm tus kis kab mob	Nyob sib nrug li 6 feet
Ha dhibaateeyn dadka kale	Kala fogaada laba mitir

www.minneapolisparcs.org/coronavirus

Education / Messaging



London Cycling Campaign @london_cycling · 3h

For key workers who need to make essential journeys by bike - we can provide live support and advice to help you cycle safely in London . Access [#LCCadvice](#) in our bio

Back on the bike?
Top tips for cycling during the coronavirus crisis

PHONE EMAIL CHAT

1

20

33

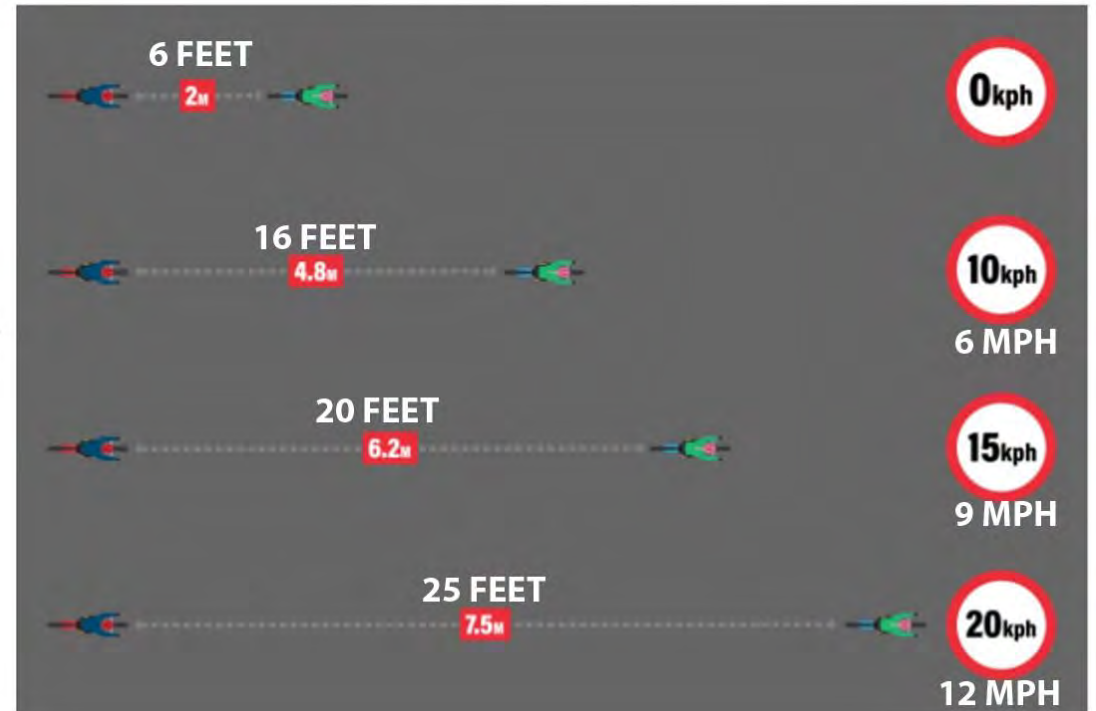


< BACK TO NEWS

NEWS

HEALTH

RIDING



How much distance should you leave to the cyclist ahead in a time of pandemic?

Planning for the Future

- This too shall pass, but when?
- This may be cyclical
- A return to *normal* will likely be more gradual
 - Some people may telecommute more
 - Monitor use of temporary facilities and traffic as conditions change
- Prepare for the future

Social Distancing Might Stop. And Start. And Stop. And Start. Until We Have A Vaccine.

"We need to figure out how we are going to live in a time of plague," said one doctor.



Dan Vergano
BuzzFeed News Reporter

Posted on April 1, 2020, at 4:15 p.m. ET

abc NEWS CORONAVIRUS HEALTH & SCIENCE

The race for a COVID-19 vaccine: Fast, but fast enough?

A vaccine within 12 to 18 months is "probably not going to happen."

Rapid Implementation Strategies for the Future

- Requires Public Engagement
- Not a complex, multi-step design process
 - Limited capital required
 - Can be done as part of resurfacing projects
- Complete networks quickly
- Support for permanent projects for the future



Community Engagement

- How do you ensure the public has a voice in any decisions made now?
 - Transparency around decisions
 - Solicit public input
 - Apply changes consistently across communities



AARP Livable Communities @AARPLivable · Mar 31

An important point that highlights the value of quality open and public spaces for people of all ages, of all demographics, and in all communities. #agefriendly



Salud America! @SaludAmerica · Mar 31

Walking and Biking Are Way Up During #COVID19, Revealing Big Inequities in Open Spaces salud.to/covidwalk #healthequity

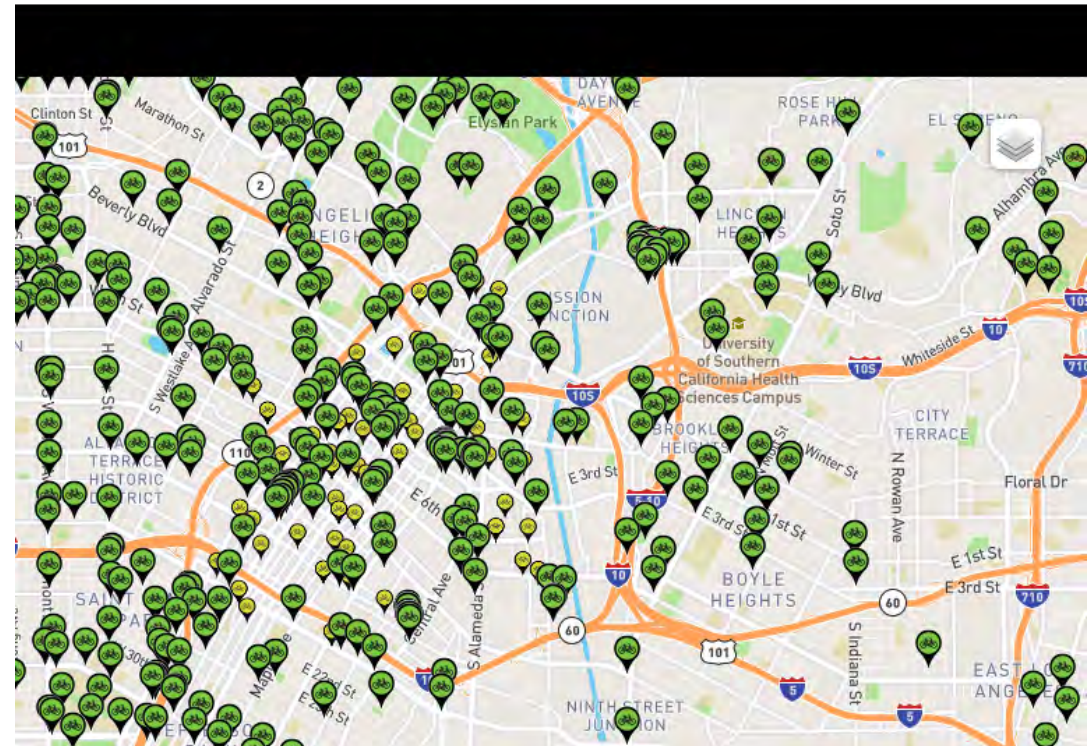


Community Engagement Ideas & Considerations

- Set up an online map for residents and businesses to share ideas
- Identify a toolkit of treatment options possible to implement

INSTRUCTIONS:

1. CLICK THE BUTTON TO SUGGEST A STATION LOCATION OR ADD A COMMENT
2. PLACE A NEW PIN ON THE MAP, OR CLICK ON AN EXISTING PIN
3. SUBMIT THE SHORT SURVEY



Community Engagement

Ideas & Considerations – Keeping Projects after COVID



Toole Design Retweeted
PeopleForBikes @peopleforbikes · Mar 28
As #NewOrleans responds to the COVID-19 pandemic, the city is still moving forward on crucial infrastructure improvements to make roads safer and less stressful for everyone.



City Moves Forward on Rapid Expansion of the Bikeway Network in Algiers...
As the City responds to the COVID-19 pandemic, New Orleans is still moving forward on crucial infrastructure improvements to make our ...
nolacompletestreets.org

Community Engagement Ideas & Considerations – Keeping Projects after COVID

The Public Design Charrette has been redesigned for on-line participation

[Home](#)

[Virtual Charrette](#)

[About](#)

[Essay](#)

[Resources](#)

[Connect](#)

[Engage](#)



Welcome to the
Virtual Charrette Hub

[Dover, Kohl & Partners](#)

Community Engagement Resources to Adapt

- Precedent to look to for engagement principles
- Resources will need to be adapted



Pop-Up Diverter; Santa Monica, CA; Photo: Gary Kavanagh

Community Engagement Resources to Adapt – Examples to pull from



The sign reads: "The limitless lane accommodates pedestrians, cyclists, wheelchair users, skateboarders, and other forms of non-motorized transportation and gives them their own space in the street."

Ash Crescent Limitless Lane;
Fort Worth, TX; Photo: City of
Fort Worth



Sidewalk Extension; Seattle, WA;
Photo: Dongho Chang

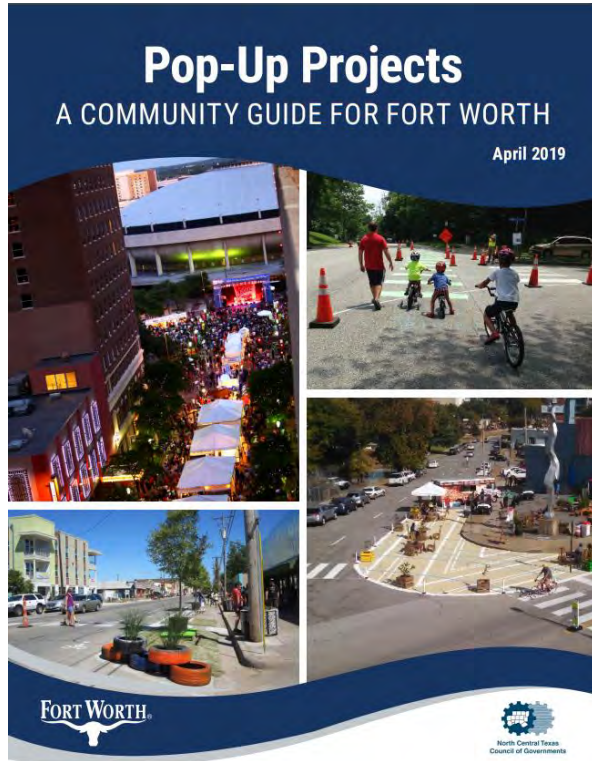


Painted Alternative Walkway;
Portland, OR; Photo: Nick Falbo



Curb Extension Made of Tires;
Springfield, MO; Photo: Andrew
Jansen

Community Engagement Resources to Adapt – DOT and Community Guides



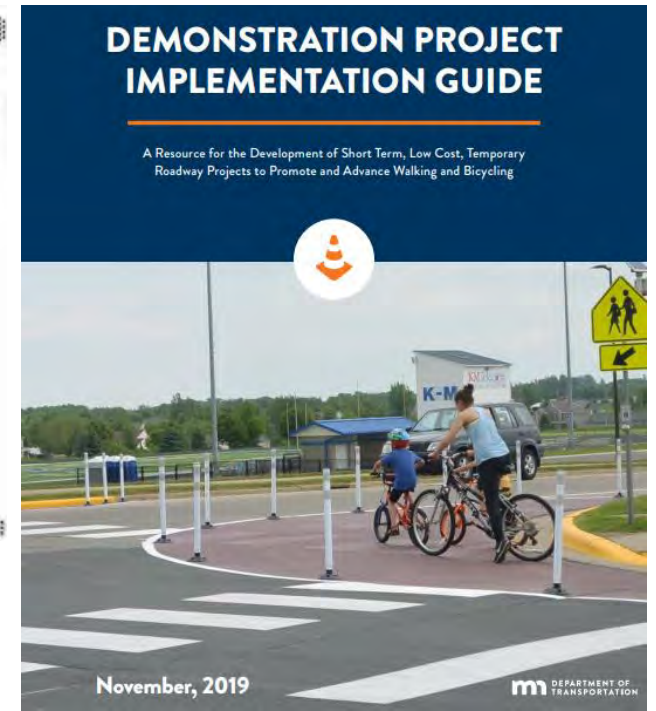
Fort Worth, TX



Fayetteville, AR



St. Louis, MO



Minnesota DOT

Pulling it all together



City of Winnipeg @cityofwinnipeg

Starting Monday, April 6, 2020, vehicle restrictions on the four streets designated bicycle/active transportation routes will be in effect daily from 8 a.m – 8 p.m.

Designated bicycle/active transportation routes:

- Lyndale Dr. - Cromwell St. to Gauvin St.
- Scotia St. - Anderson Ave. to Armstrong Ave.
- Wellington Cres. - Academy Rd. to Guelph St.
- Wolseley Ave. - Ragland Rd. to Maryland St.

Visit winnipeg.ca/COVID-19 or contact 311 for updates

4:33 PM · Mar 31, 2020 · Twitter Web App



"Twin Peaks Blvd is closed to cars and its wonderful and easy to keep your distance."
Credit: Liam Foley
(San Francisco)


Think big – but also think small



Credit: Brian Patterson

Resources – Organizations

COVID-19: [Transportation Response Center](#)



National Association of City Transportation Officials

[About](#)
[Programs & Initiatives](#)
[Guides & Publications](#)
[Events & Trainings](#)

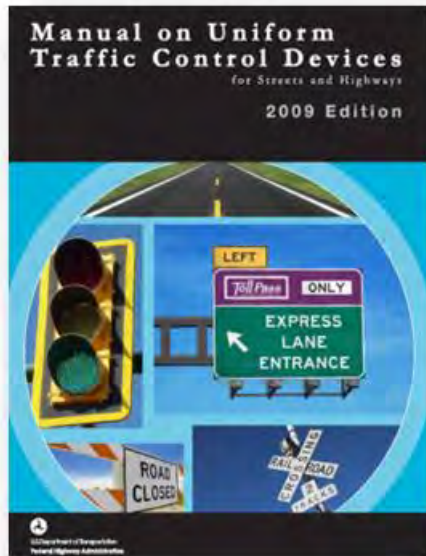
NACTO: Transportation Actions Updates

Location	State	Country	Mode	Service Change	Description	Date
Lane County	OR	US	Bus	Maintenance & Cleaning, Rear-door Boarding, Fare Suspension, Service Changes	Lane Transit District (LTD) takes COVID-19 precautions	3/30/2020
London		United Kingdom	Car, Bikeshare	Congestion Pricing Suspension, Free Bikeshare	TfL suspends all road user charging schemes to help critical workers	3/23/2020
London		United Kingdom	Bus	Fare Suspension, Rear-door Boarding	COVID-19: Bus rides are free till April 5, but use the back door. London Transit says	3/19/2020
Long Beach	CA	US	Bike	Bikeshare Suspension	To further the City's efforts to reduce the spread of #COVID19, Long Beach BikeShare service has been suspended until further notice.	3/30/2020
Los Angeles	CA	US	Walk	Crossings	@MayorOfLA just announced that beg buttons are being disconnected in pedestrianized areas to provide automatic walk buttons.	3/30/2020
Los Angeles	CA	US	Bus	Service Changes	L.A. Metro rail and bus services will continue to run, some schedules will be adjusted to reflect the reality of the decline in ridership. L.A.	3/23/2020
Los Angeles	CA	US	Bus	Fare Suspension, Rear-door Boarding	LADOT DASH Begins Free Service, Backdoor Boarding to Assist Riders During COVID-19 Crisis	3/23/2020
Madison	WI	US	Transit	Service Changes, Crowding Mitigation, Fare Suspension	COVID-19 Updates	



VISION 4 NETWORK

Resources – Materials



Online learning opportunity! @USDOTFHWA has launched a free course on bikeway planning and selection.



FHWA Launches Online Bicycle Facility Design Course - Toole Design
If you are interested in learning more about the planning and design of bicycle facilities and have a little extra...
tooledesign.com

- MUTCD – Part 6: [Temporary Traffic Control](#)
- Tactical Urbanism [Guide](#) to Materials and Design
- Bicycle Facility Design – new [online course](#) from FHWA



Thank you

www.tooledesign.com

jzdeb@tooledesign.com

bdubose@tooledesign.com



[@tooledesign](https://twitter.com/tooledesign)

MTC Quick Build Survey Link

We want your feedback! What are your agency quick build needs?

Please take the time to fill out the below survey with contact info by April 17th

<https://www.surveymonkey.com/r/QUICKBUILDS>

**Thank you
and Take Care!**



Contact for more info:

Toshi Shepard-Ohta, Principal Engineer

tshepard-ohta@bayareametro.gov

Nicola Szibbo, Program Manager

nszibbo@bayareametro.gov