

# The West Oakland Link

## Community Design Review

APRIL 09, 2024



West Oakland  
Environmental  
Indicators  
Project



COMMUNITY DESIGN REVIEW

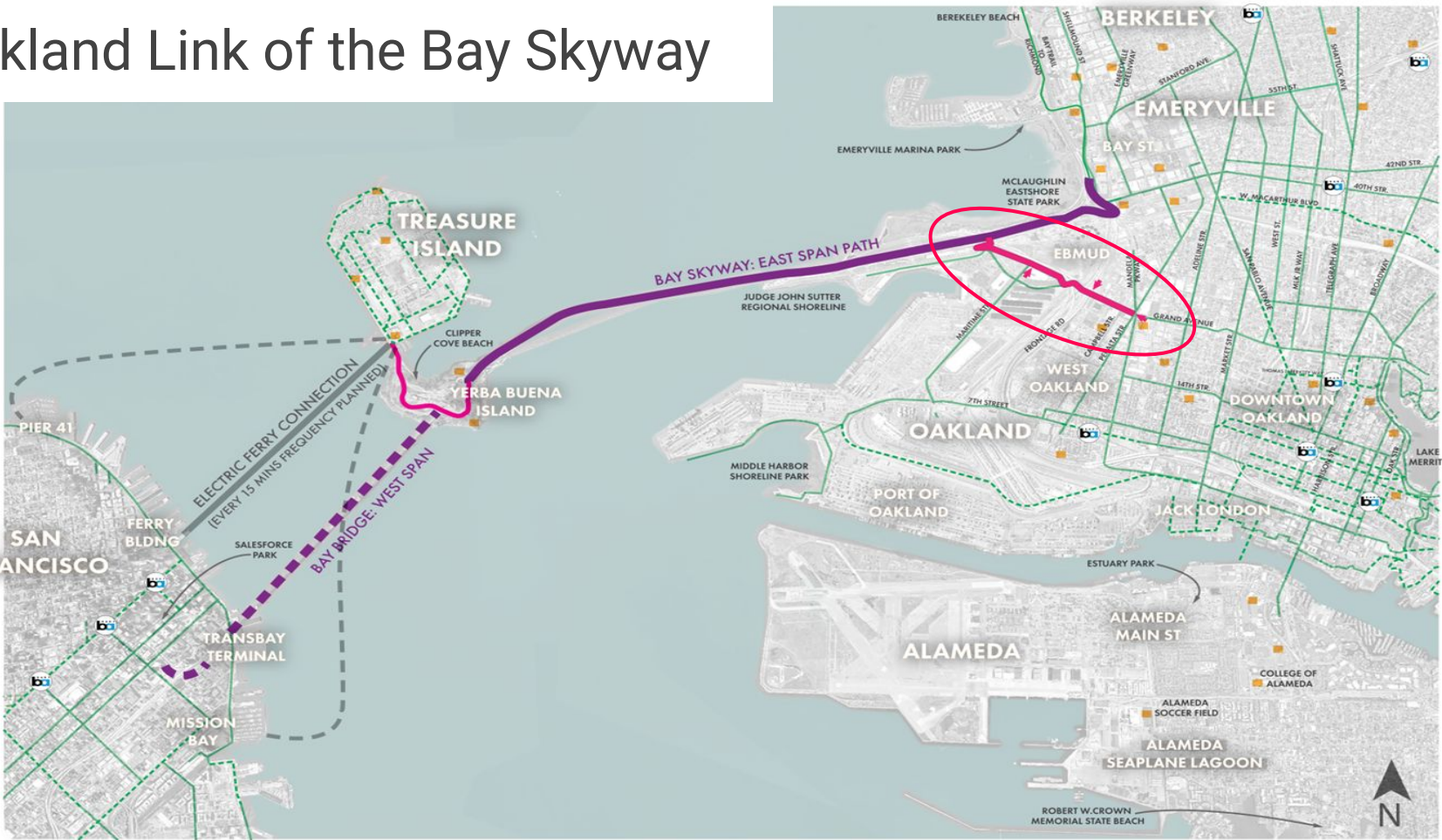
APRIL 9, 2024



TYLin

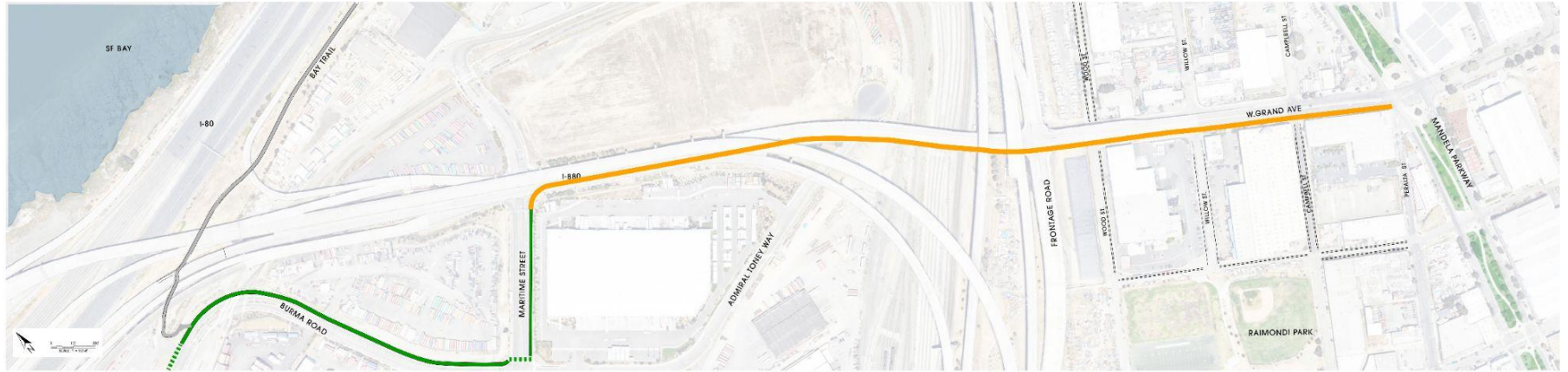
# West Oakland Link of the Bay Skyway

- LEGEND**
- BAY SKYWAY PHASE 1**
- WEST OAKLAND LINK
  - YERBA BUENA/TREASURE ISLAND PATH
  - ELECTRIC FERRY
  - EAST SPAN PATH
  - ENTRANCES TO WEST OAKLAND LINK
- BAY SKYWAY PHASE 2**
- WEST SPAN PATH
  - PROPOSED FERRY ROUTES
- EXISTING PATH OR PROTECTED BIKE LANE
- PROPOSED PATH OR PROTECTED BIKE
- LOCAL ATTRACTIONS
- BART STATIONS



# Bay Bridge Forward - Bike & Pedestrian Path

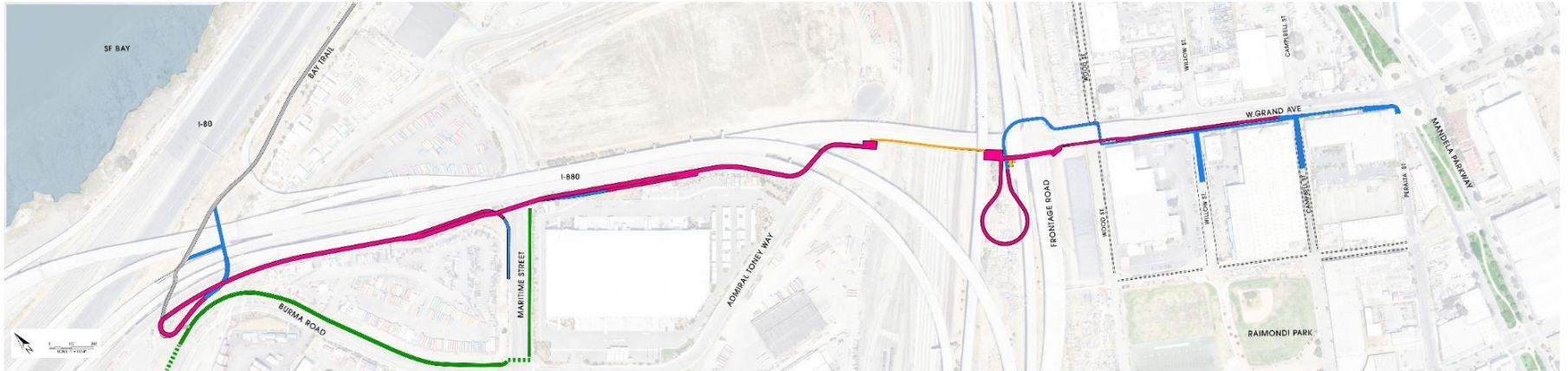
- 2025 Summer - Temporary multi-use path opens on West Grand Ave**
- Mandela Parkway to Maritime Street bike/pedestrian path (8' wide)
  - Connecting Oakland to Treasure Island (ferry to downtown SF)



# West Oakland Link - Bike & Pedestrian Path

2028 - Bay Skyway Phase 1 & West Oakland Link open (mostly 15' wide)

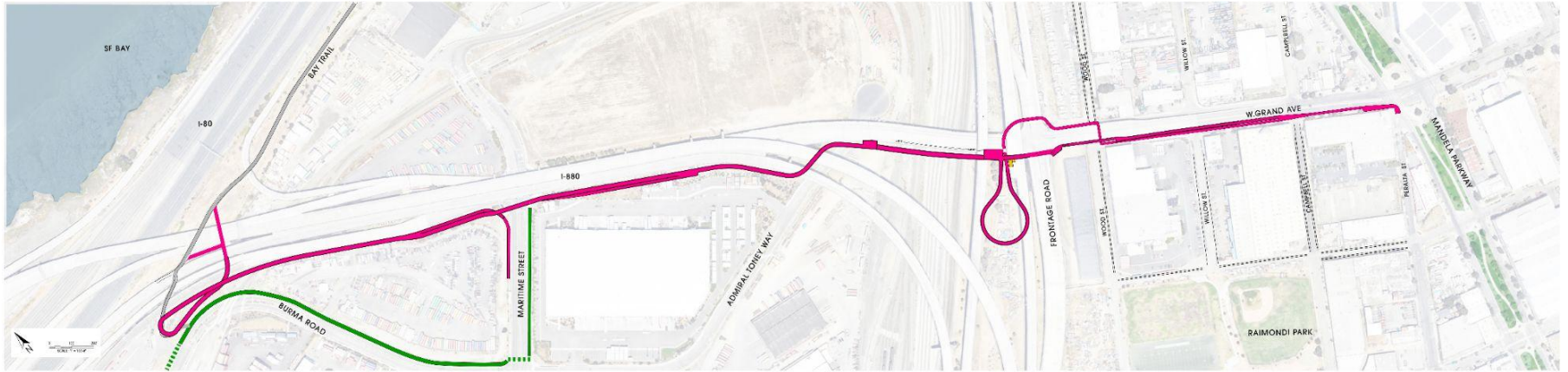
- Temporary path will stay open during construction
- All ages and abilities connection between Oakland to Treasure Island (ferry to downtown SF)



# West Oakland Link - Bike & Pedestrian Path

Future - Bridge over railway completes the West Oakland Link (15' wide)

- Timeline is dependent on developing the bridge as a new project and securing new funding sources.



# Agenda

---

- **Bay Skyway Context**
- **Neighborhood Context and Feedback**
- **On Bridge Structure**
  - **Bridge Design**
  - **Rest Areas (Nodes)**
- **West Oakland Ground Plane**
  - **Mandela and West Grand Ave**
  - **West Grand Alley**
  - **Activating space under Grand Ave**
- **Questions**
- **Frontage Loop - Planting Area**
- **Bay Trail Touchdown**
- **Questions**

# THE **WHY?**

- THE WEST OAKLAND LINK IS A DIRECT, **SEAMLESS BICYCLE AND PEDESTRIAN CONNECTION** BETWEEN WEST OAKLAND AND THE BAY BRIDGE EAST SPAN PATH, THAT, AS PART OF THE BAY SKYWAY PHASE 1, WILL CONNECT THE OAKLAND WITH TREASURE ISLAND AND DOWNTOWN SAN FRANCISCO VIA A FREQUENT ELECTRIC FERRY.
- THIS PROJECT CONNECTS THE **PEOPLE OF WEST OAKLAND TO THE BAY** AFTER BEING HISTORICALLY CUT OFF FROM THE WATER.
- WE AIM TO PROVIDE A SAFE ROUTE THROUGH A SERIES OF INFRASTRUCTURE BARRIERS WHILE REVEALING HIDDEN LANDSCAPES. THE ENTIRE PROJECT IS LOCATED ON FILL WHICH WAS PREVIOUSLY **BAY AND MARSH LAND**.



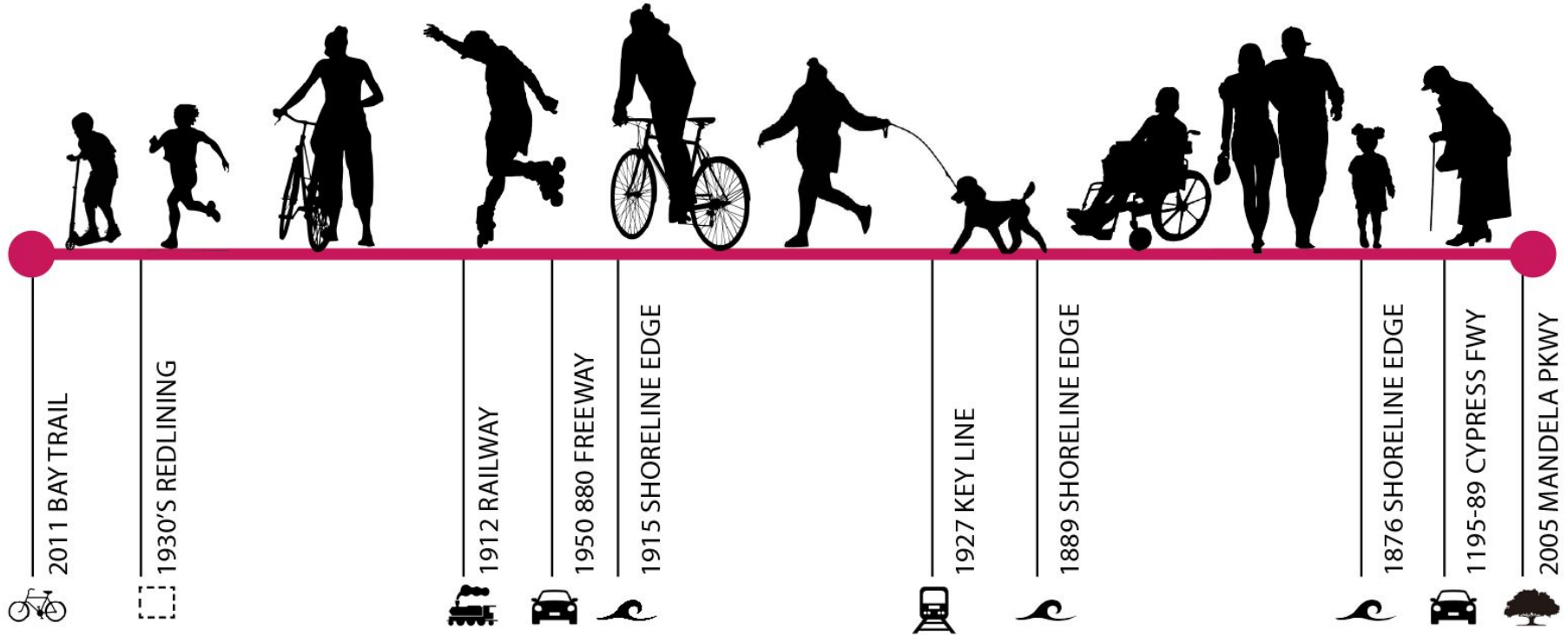
COMMUNITY DESIGN REVIEW

APRIL 9, 2024



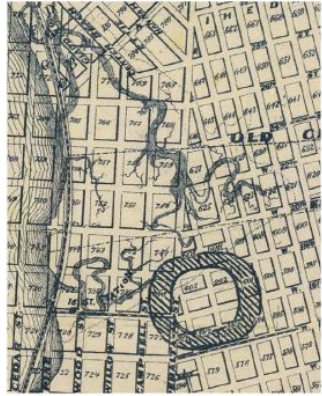
TYLin

# TIME ON A LINE: WHAT SHOULD BE REMEMBERED





# TIME ON A LINE: REVEALING HIDDEN HISTORIES



HISTORIC SHORELINE



16TH STREET STATION AND PULLMAN PORTERS HISTORY ON STRUCTURE



1989 EARTHQUAKE & WOEIP TODAY



PORT HISTORY



HISTORICAL HABITAT RESTORATION



OHLONE AND HISTORIC SHORE LINE



COMMUNITY DESIGN REVIEW

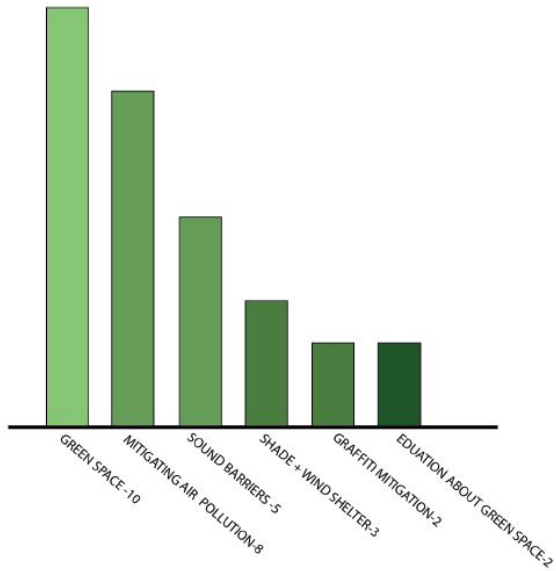
APRIL 9, 2024



TYLin

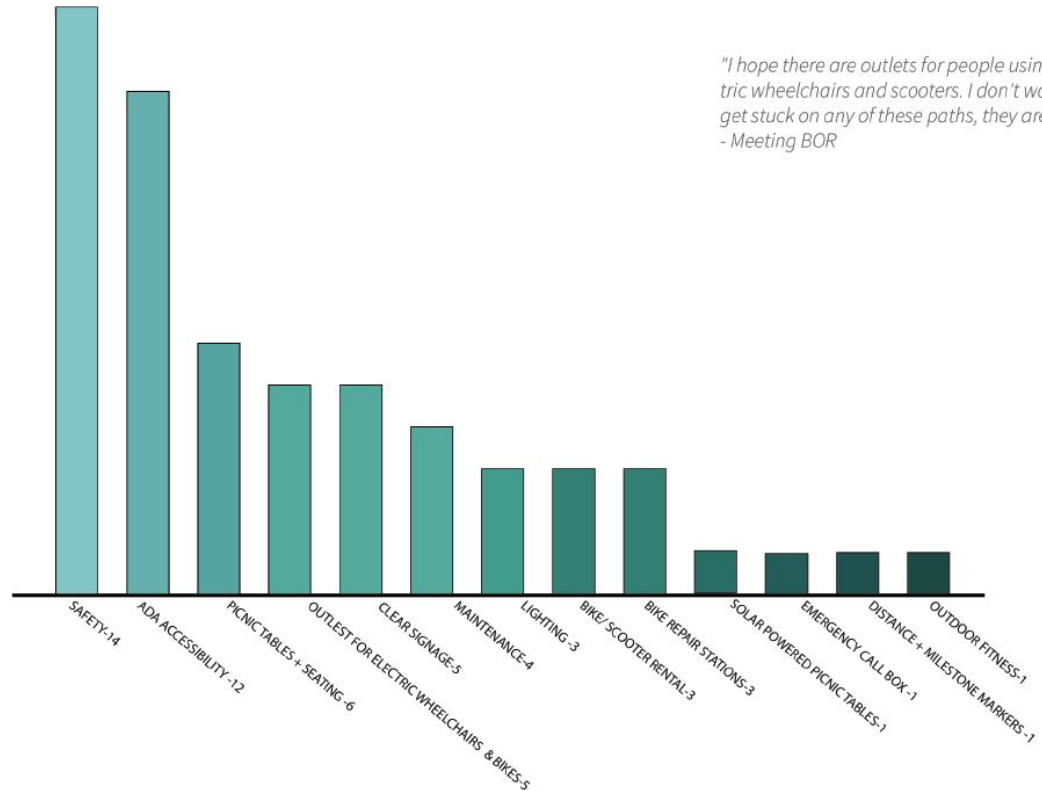
# COMMUNITY FEEDBACK: GENERAL TO THE PROJECT

"Using palm trees would tie into the plans for Treasure Island parks & open spaces, which may provide some trail consistency."  
- Meeting 5



COMMUNITY FEEDBACK: ENVIRONMENT

"I hope there are outlets for people using electric wheelchairs and scooters. I don't want to get stuck on any of these paths, they are long."  
- Meeting BOR



COMMUNITY FEEDBACK: INFRASTRUCTURES + AMENITIES

# Bridge On-Structure



West Oakland  
Environmental  
Indicators  
Project



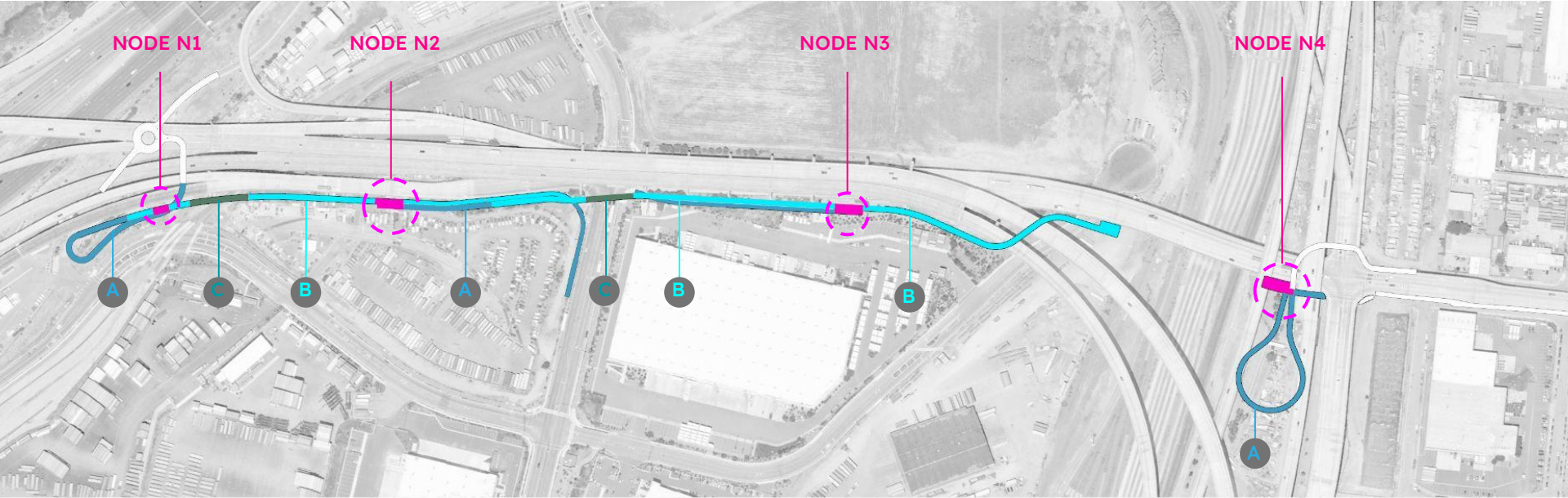
COMMUNITY DESIGN REVIEW

APRIL 9, 2024



TYLin

# Map



**A**  
Bike Railing  
Low-Low  
(ramps)

**B**  
Bike Rail + Fence  
High-Low  
(next to Hwy)

**C**  
All Fence  
High-High  
(over RR or St)



West Oakland  
Environmental  
Indicators  
Project



COMMUNITY DESIGN REVIEW

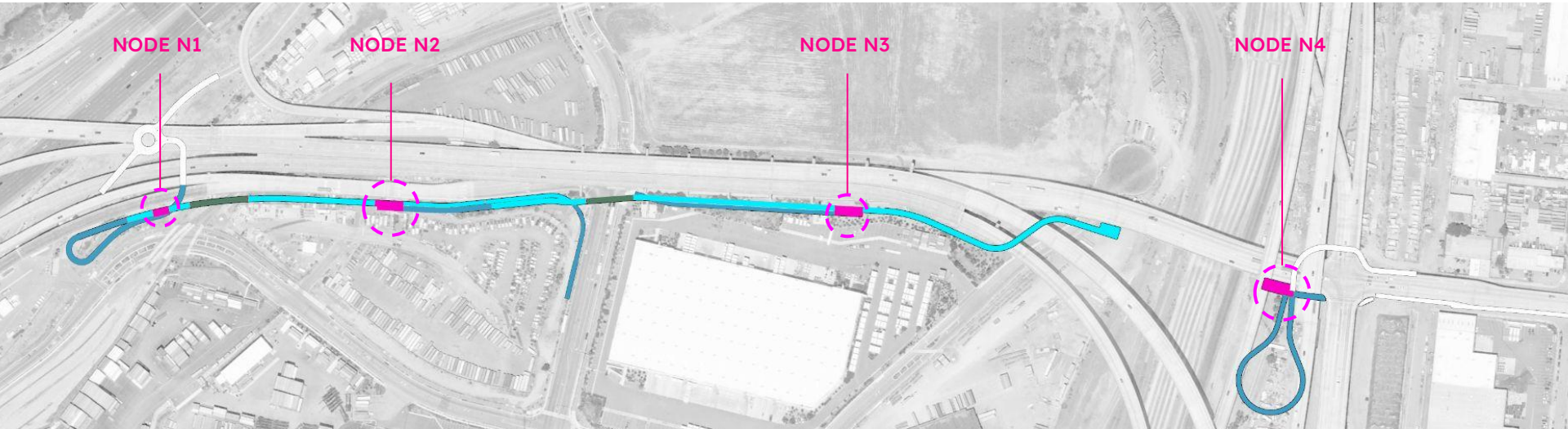
APRIL 9, 2024



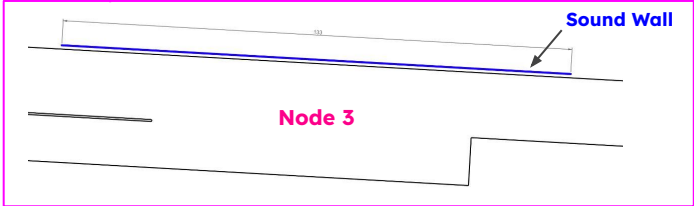
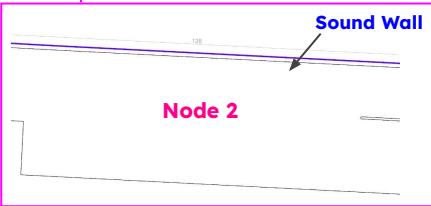
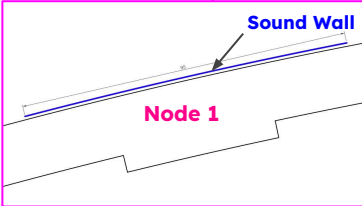
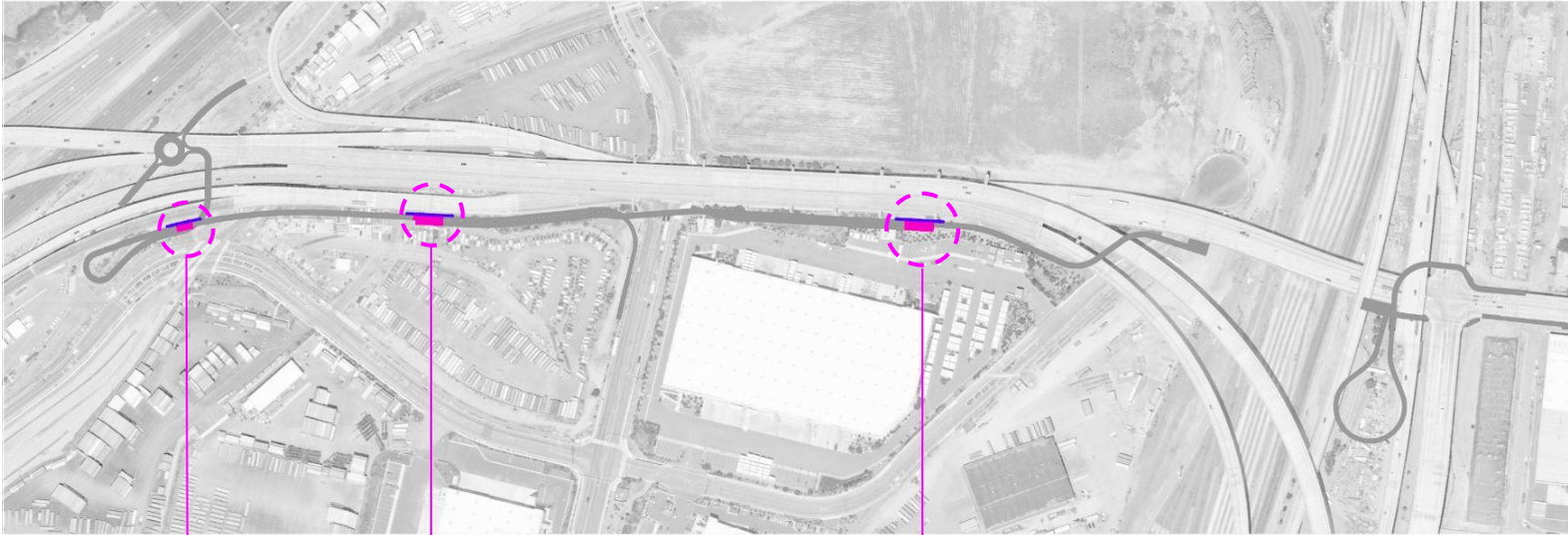
TYLin

# What is a Node?

A “node” denotes a location for rest or stopping. Some of these locations have a wider bridge width, allowing more space for amenities such as benches or shade structures.

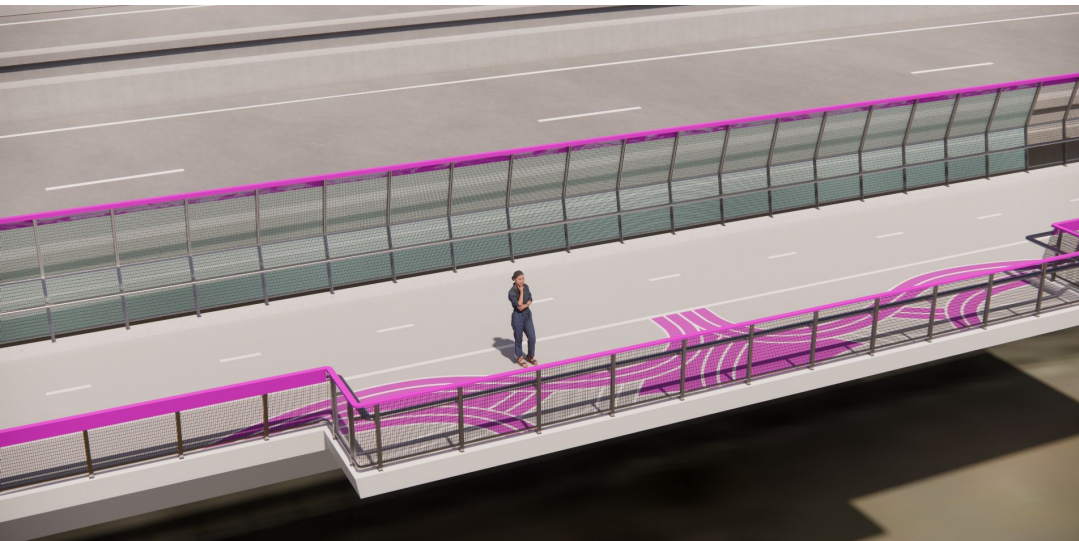


# Sound Barrier



Noise barrier system will be positioned on the north side of the pathway adjacent to the freeway to reduce the transmission of traffic noise to cyclists and pedestrians. The length varies based on the length of the nodes and extends out on each end, providing a transitional view leading into the nodes.

# Sound Barrier



Node 1 - Sound Panel



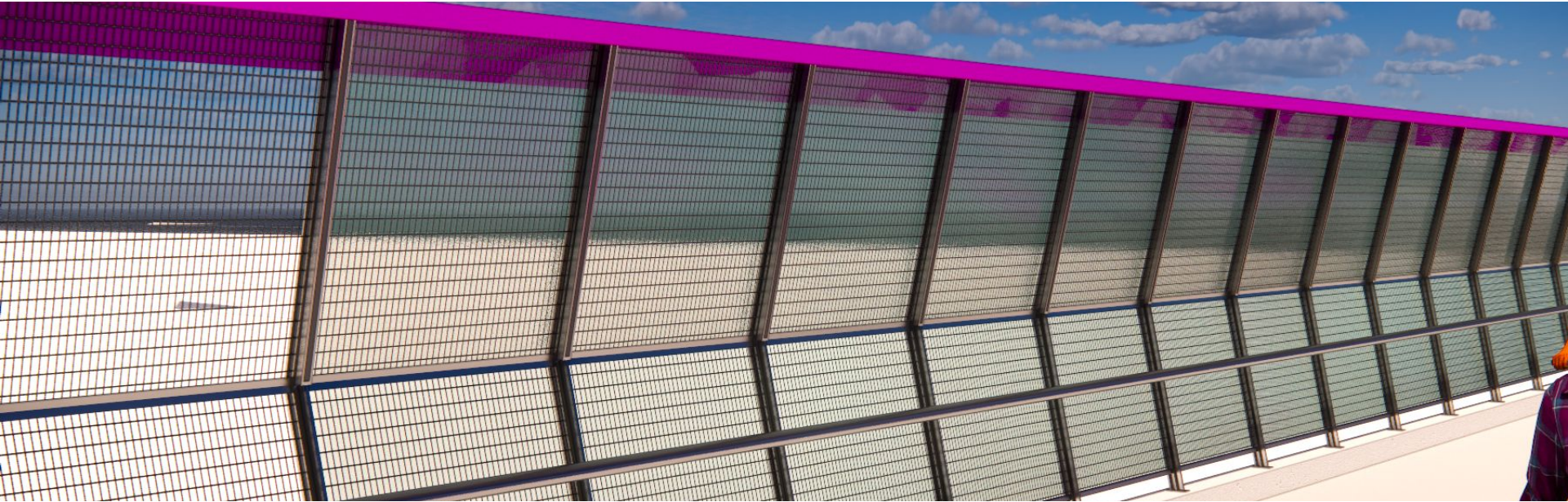
COMMUNITY DESIGN REVIEW

APRIL 9, 2024



TYLin

# Sound Barrier

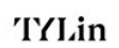


Node 1 - Mesh panel in front with sound panel behind



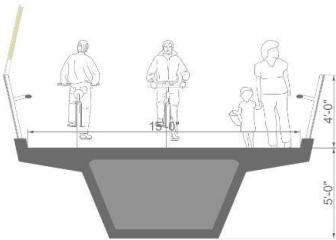
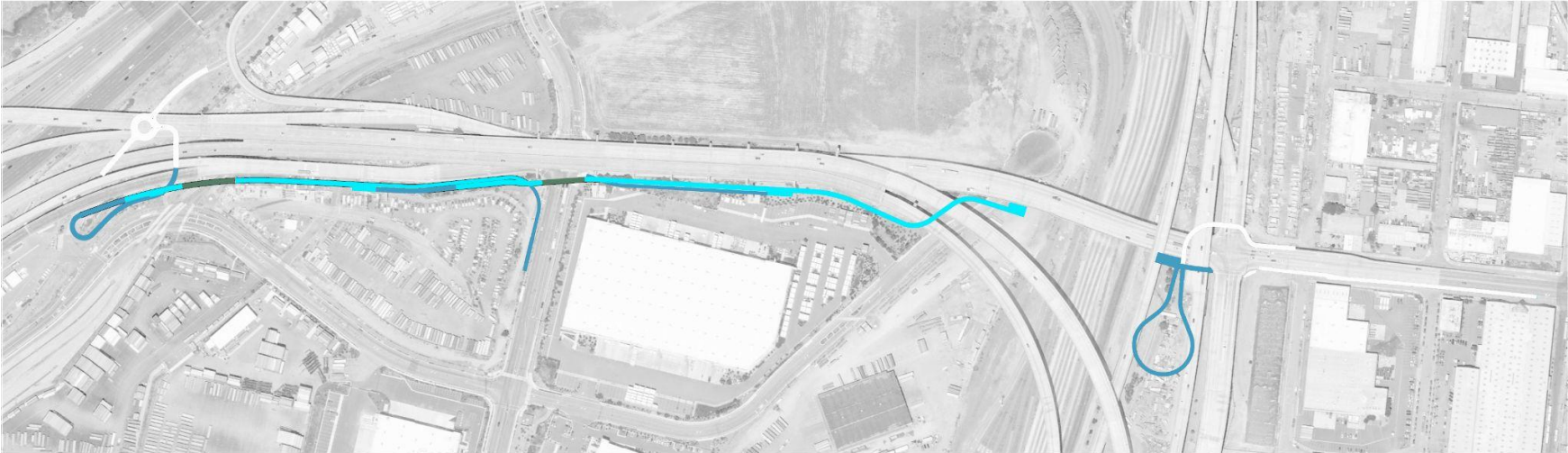
COMMUNITY DESIGN REVIEW

APRIL 9, 2024

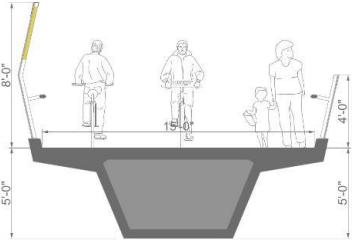




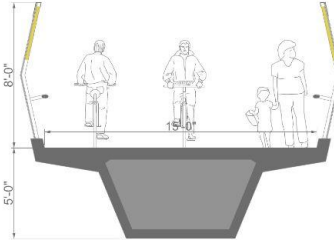
# Lighting



**A**  
Low-Low



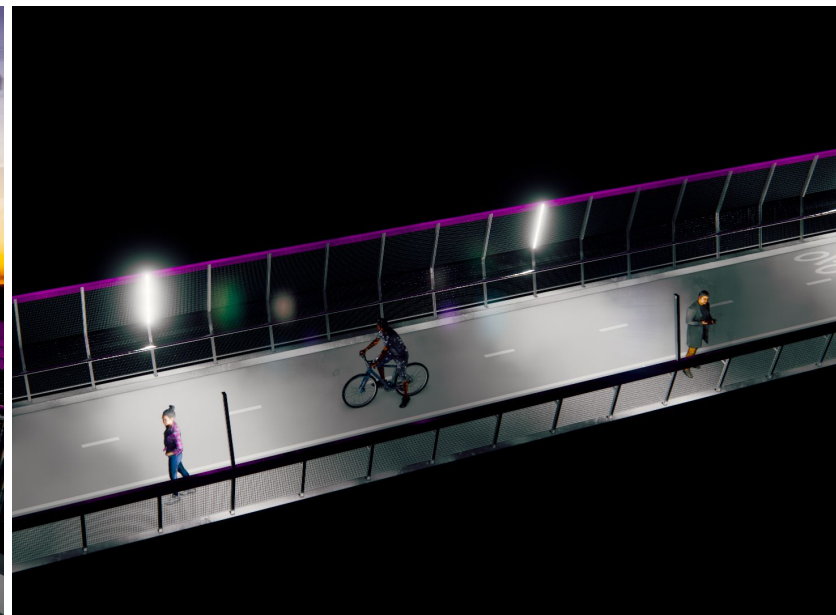
**B**  
High-Low



**C**  
High-High

Light Fixture Post Extension  
Vertical LED Fixture  
With 20-30 ft Spacing

# Lighting



Node 1 - Mesh panel in front with sound panel behind



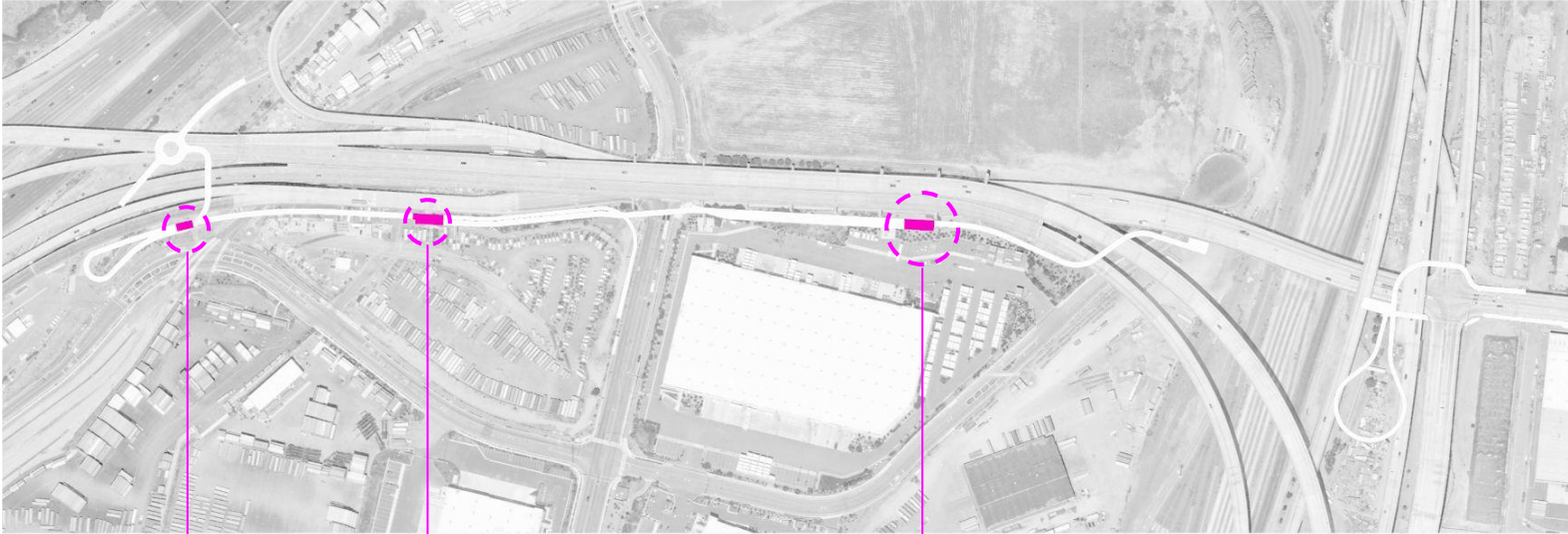
COMMUNITY DESIGN REVIEW

APRIL 9, 2024



TYLin

# Shade

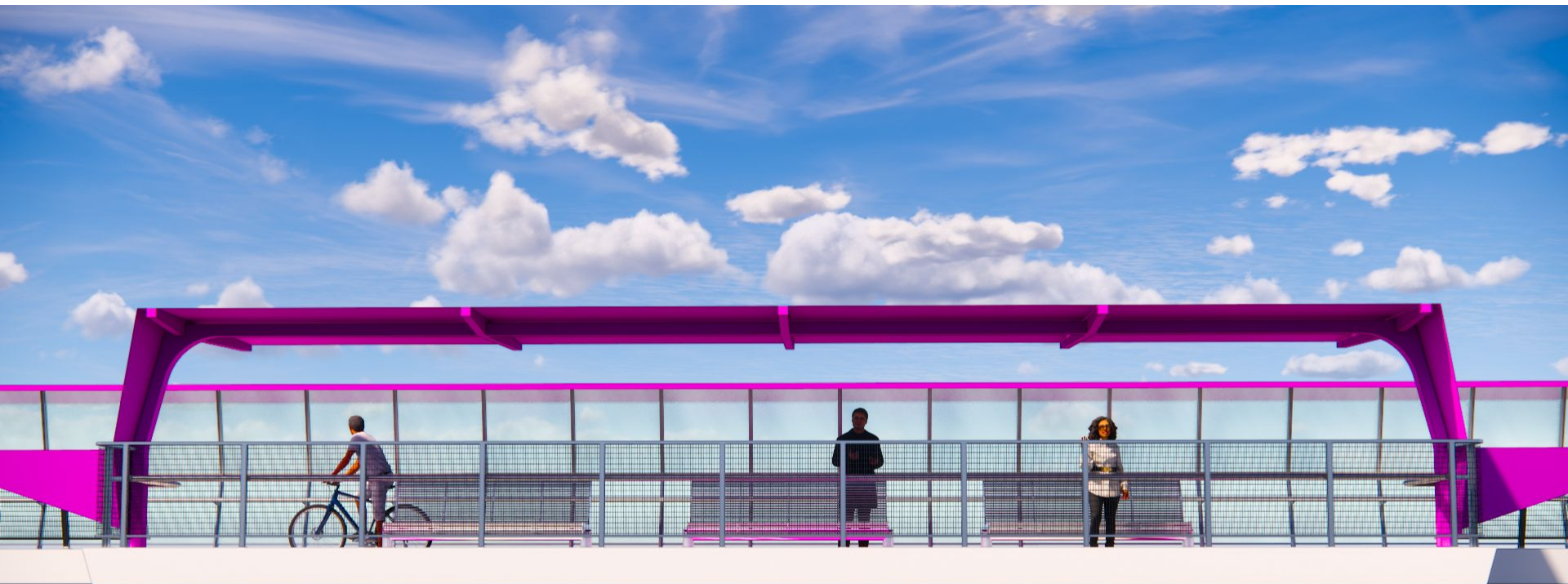


Node 1

Node 2

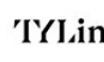
Node 3

# Shade - Option A

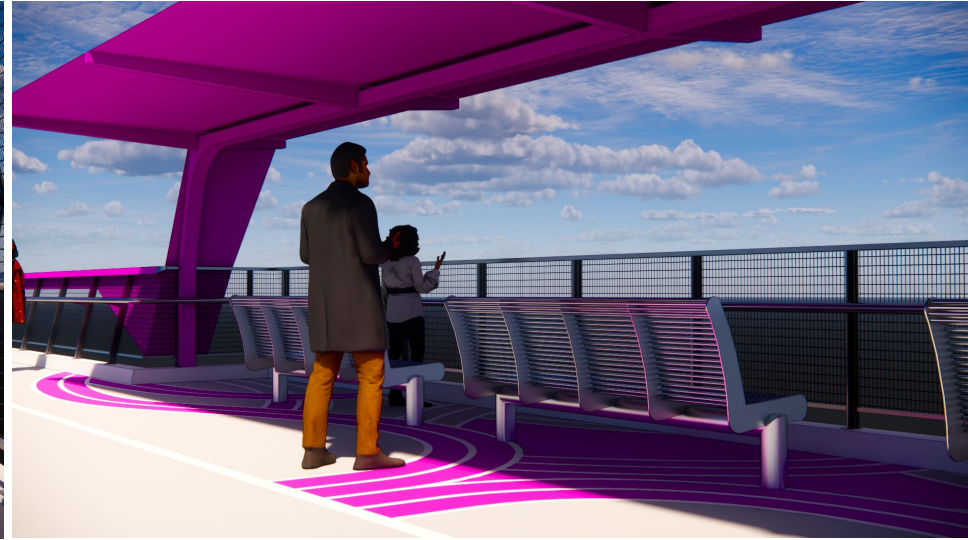
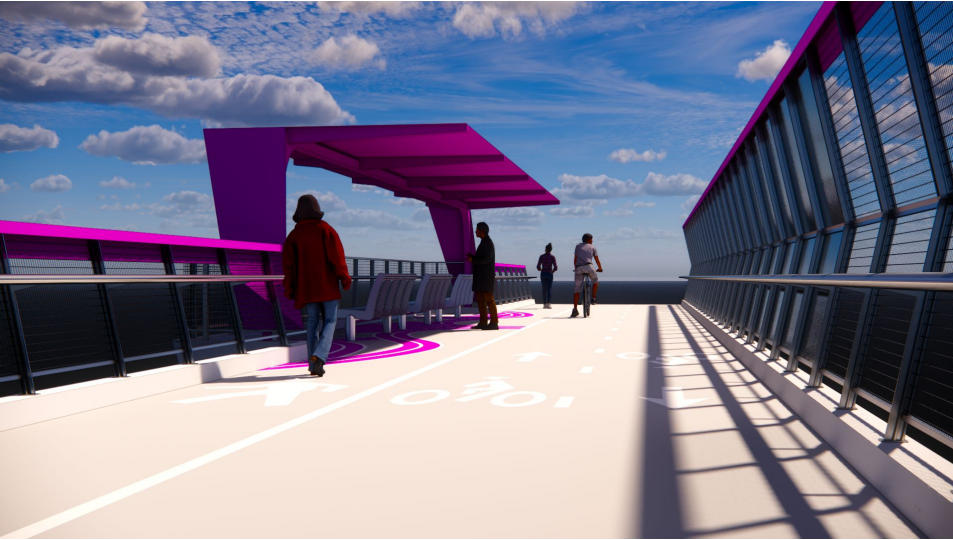


COMMUNITY DESIGN REVIEW

APRIL 9, 2024



# Shade - Option A



# Shade - Option B



West Oakland  
Environmental  
Indicators  
Project



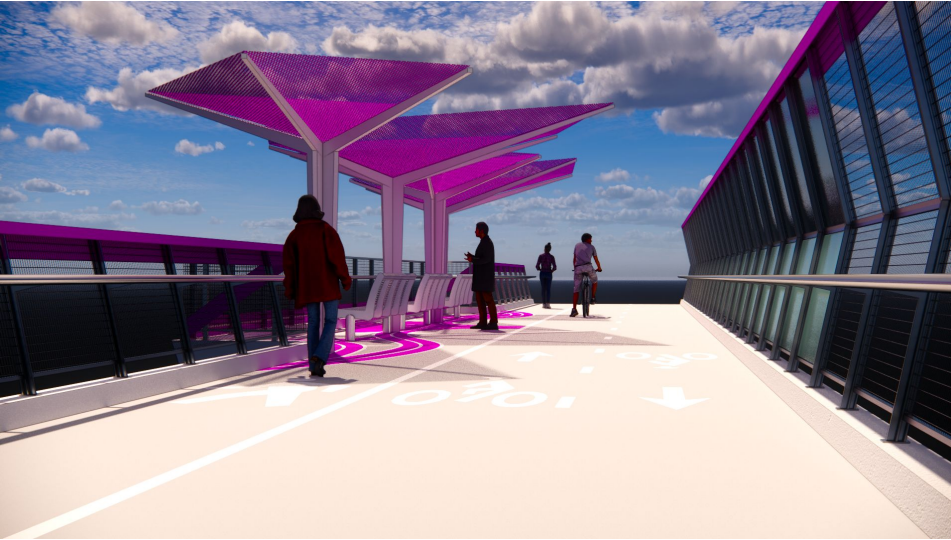
COMMUNITY DESIGN REVIEW

APRIL 9, 2024



TYLin

# Shade - Option B

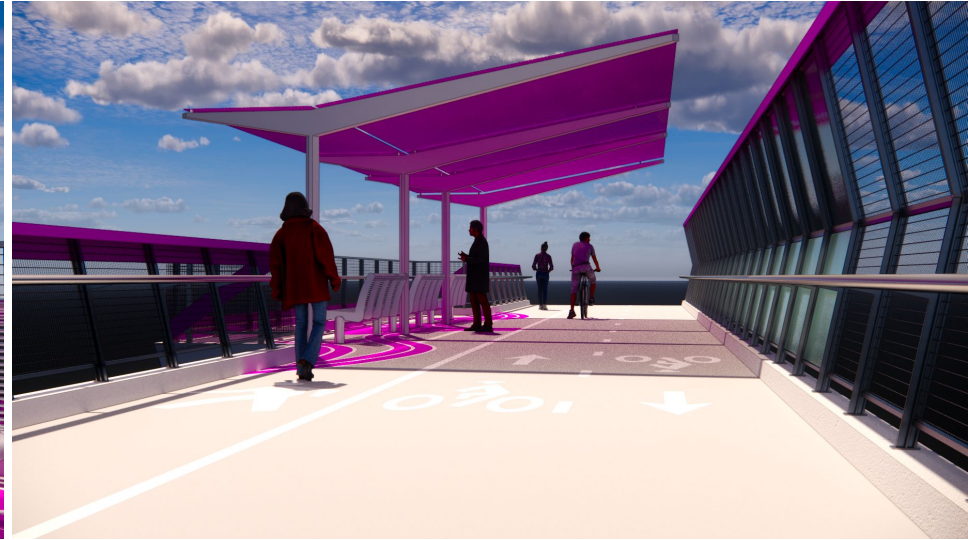


# Shade - Option C

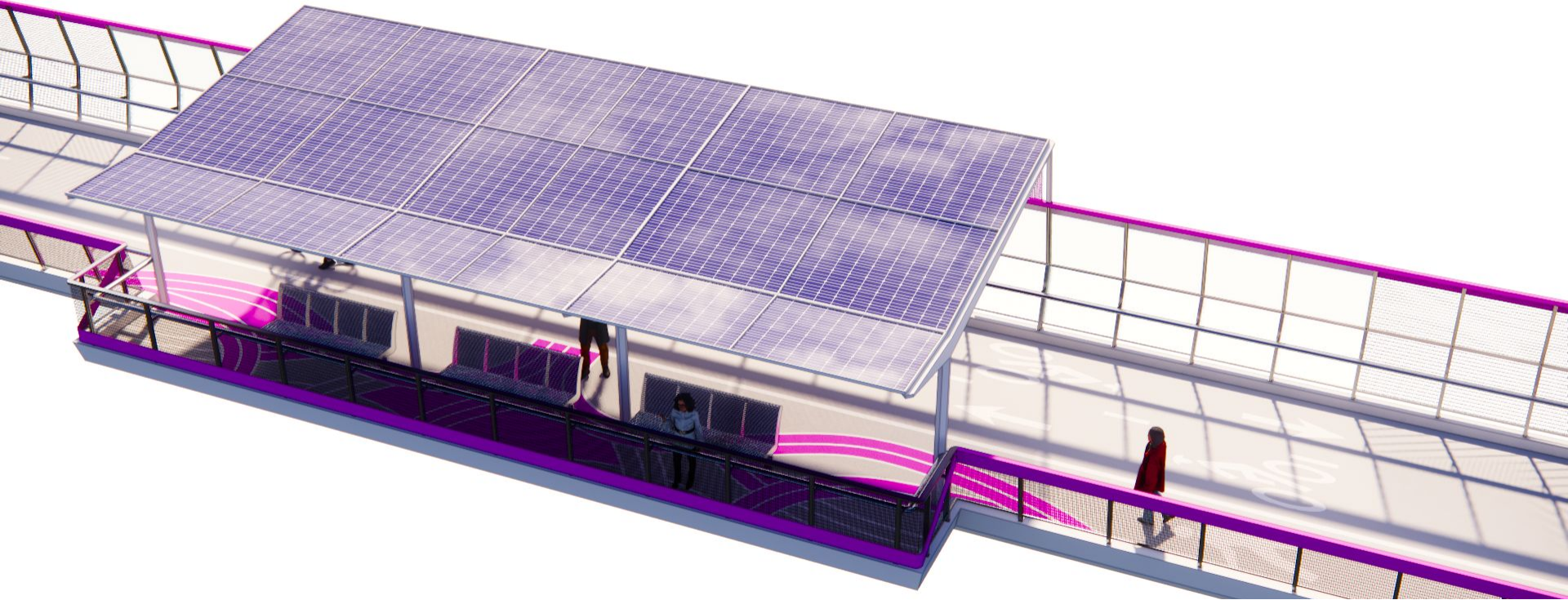




# Shade - Option C



# Shade - Option D



West Oakland  
Environmental  
Indicators  
Project



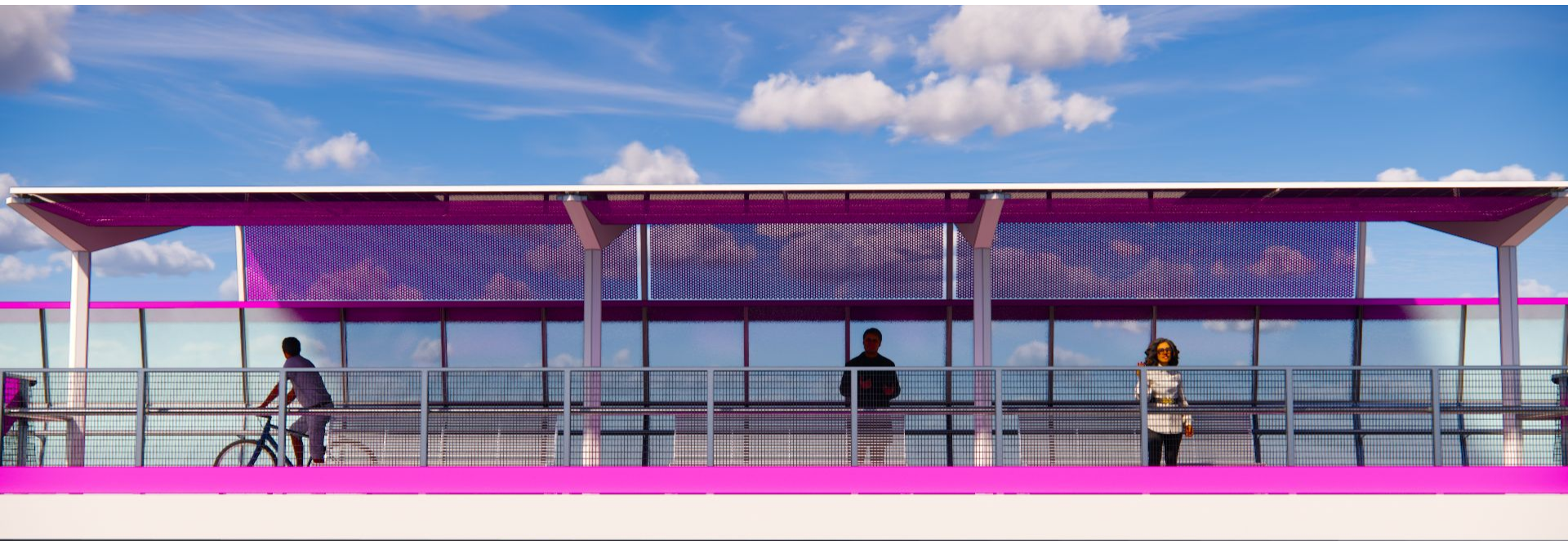
COMMUNITY DESIGN REVIEW

APRIL 9, 2024



TYLin

# Shade - Option D



COMMUNITY DESIGN REVIEW

APRIL 9, 2024



TYLin

# Shade - Option D



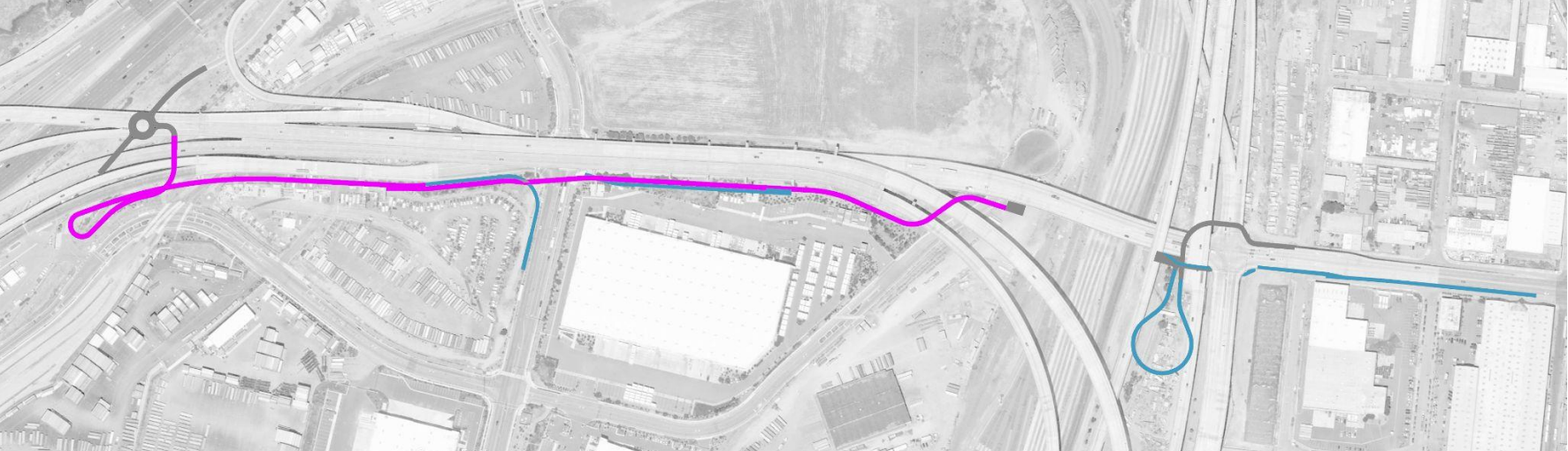
COMMUNITY DESIGN REVIEW

APRIL 9, 2024

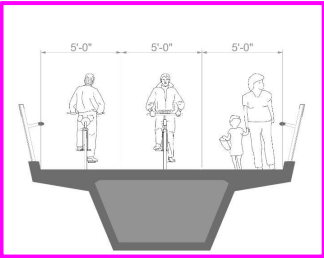
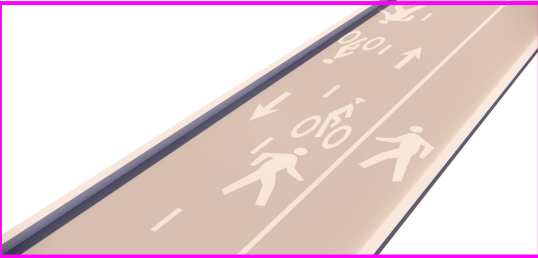


TYLin

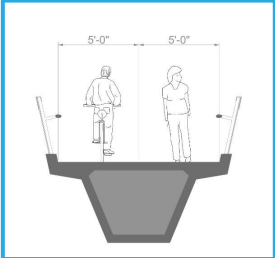
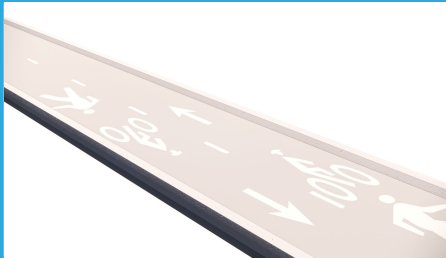
# Deck Treatment



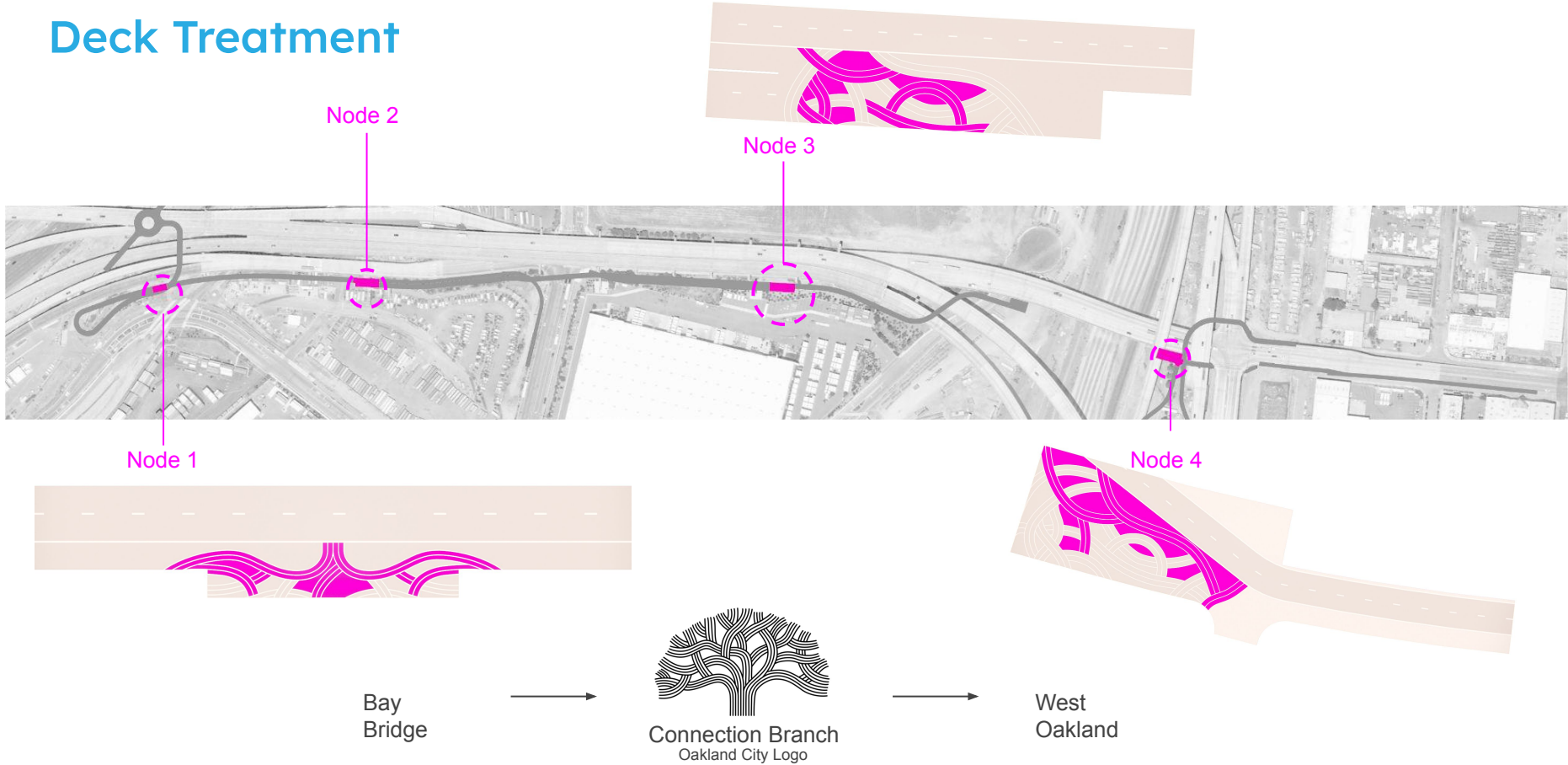
Separated Path



Merged Path



# Deck Treatment



COMMUNITY DESIGN REVIEW

APRIL 9, 2024

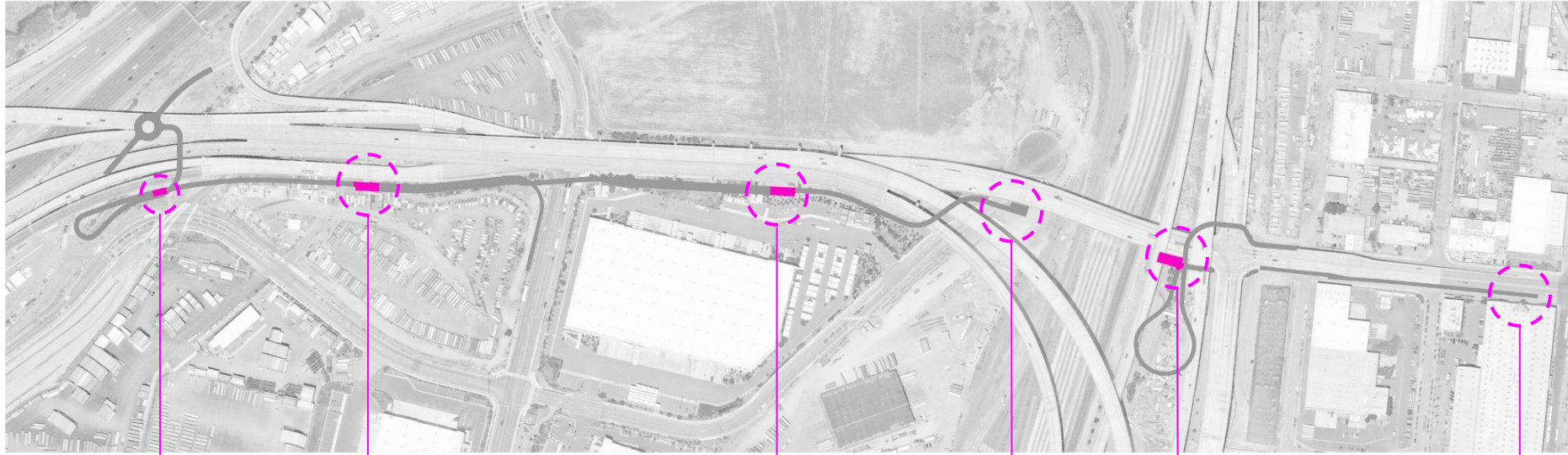


TYLin

# Deck Treatment



# Amenities



Bike Racks  
Signage/Map  
Seating  
Mile Marker

Bike Racks  
Signage/Map  
Seating  
Mile Marker

Bike Racks  
Signage/Map  
Seating  
Mile Marker

Mile Marker

Bike Racks  
Trash Bins  
Bike Repair Station  
Signage/Map  
Seating  
Mile Marker

Mile Marker



West Oakland  
Environmental  
Indicators  
Project



COMMUNITY DESIGN REVIEW

APRIL 9, 2024



TYLin



# Amenities

Bike Racks



Bike Repair Station



Trash Bins



Seating



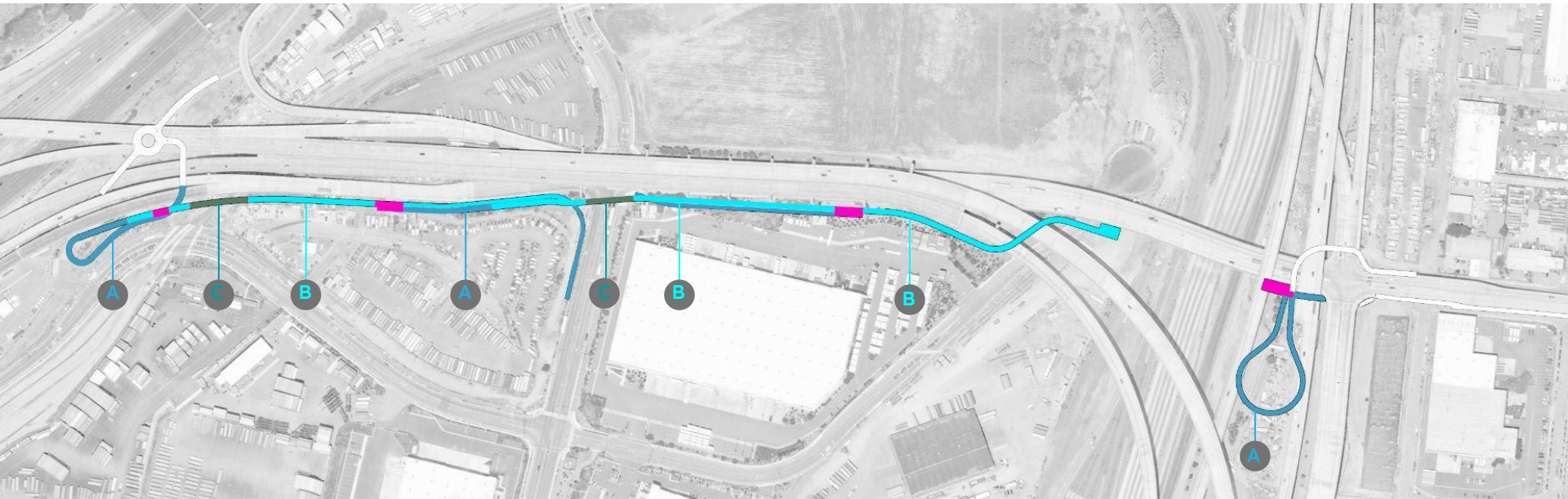
Signage/Map



Mile Marker



# Railing Types

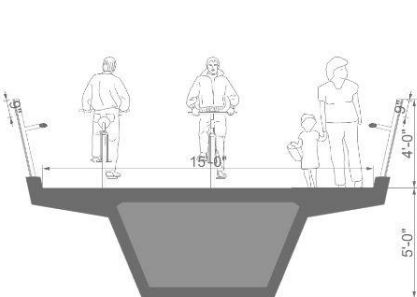


**A**  
Bike Railing  
Low-Low  
(ramps)

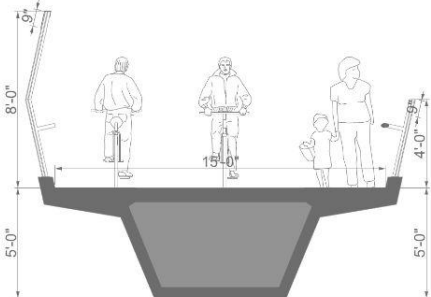
**B**  
Bike Rail + Fence  
High-Low  
(next to Hwy)

**C**  
All Fence  
High-High  
(over RR or St)

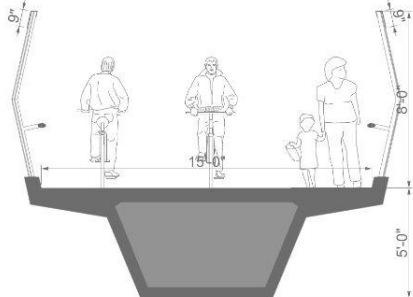
# Railing



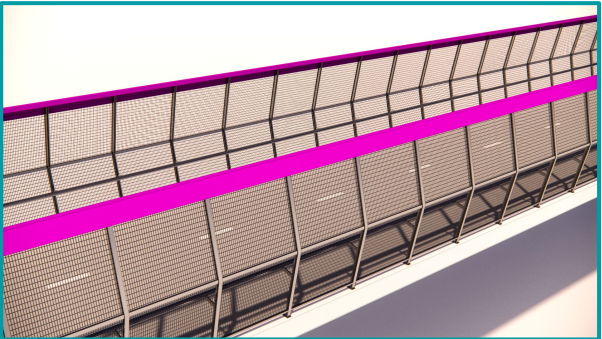
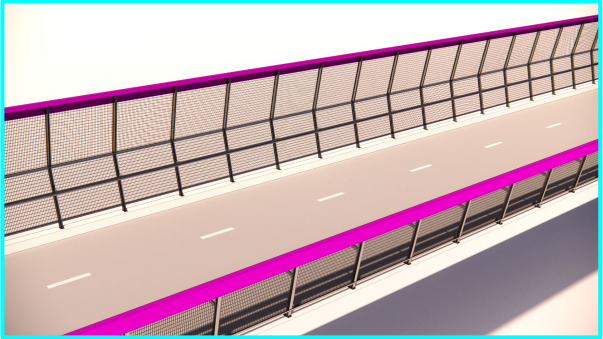
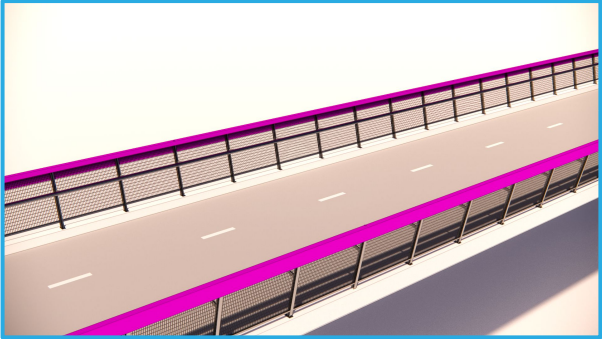
**A**  
Low-Low



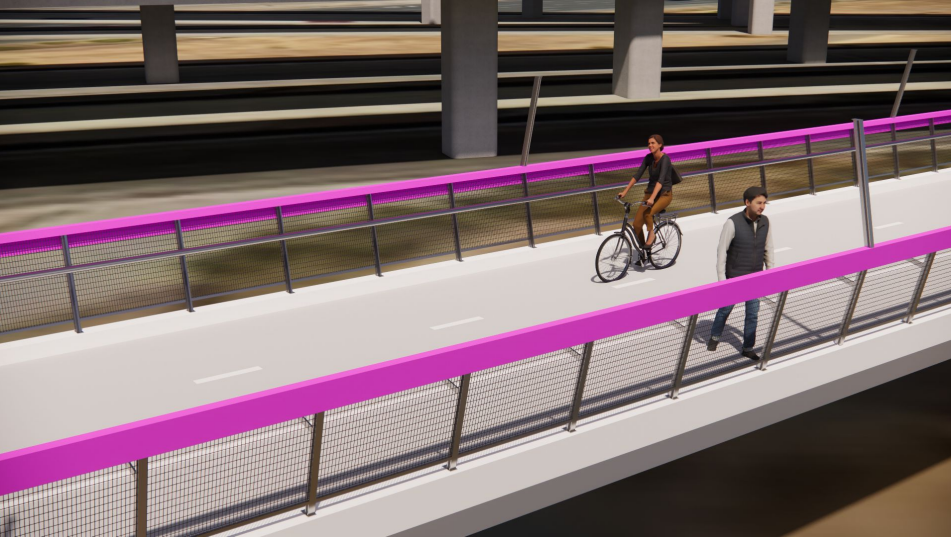
**B**  
High-Low



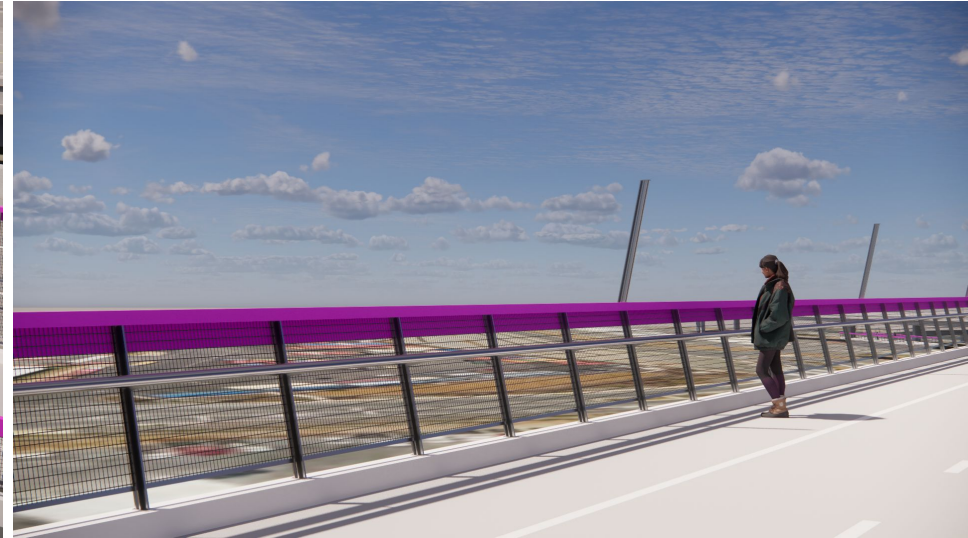
**C**  
High-High



# Railing - Low Low



# Railing - Low High



West Oakland  
Environmental  
Indicators  
Project



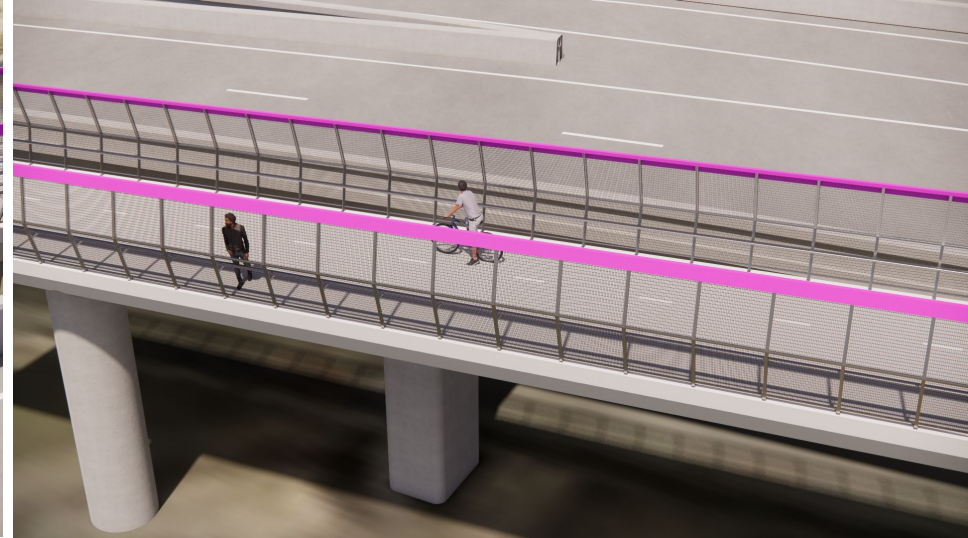
COMMUNITY DESIGN REVIEW

APRIL 9, 2024



TYLin

# Railing - High High



West Oakland  
Environmental  
Indicators  
Project



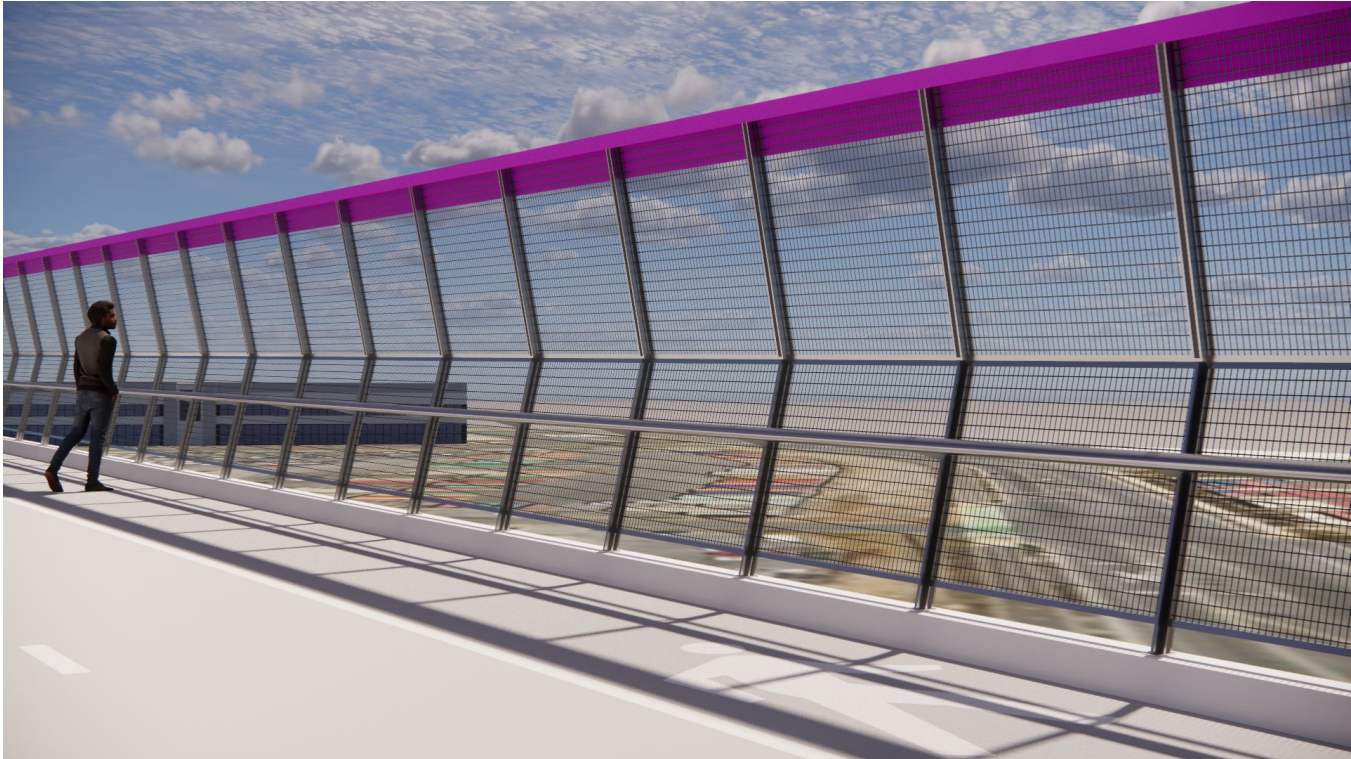
COMMUNITY DESIGN REVIEW

APRIL 9, 2024



TYLin

# Railing - High High



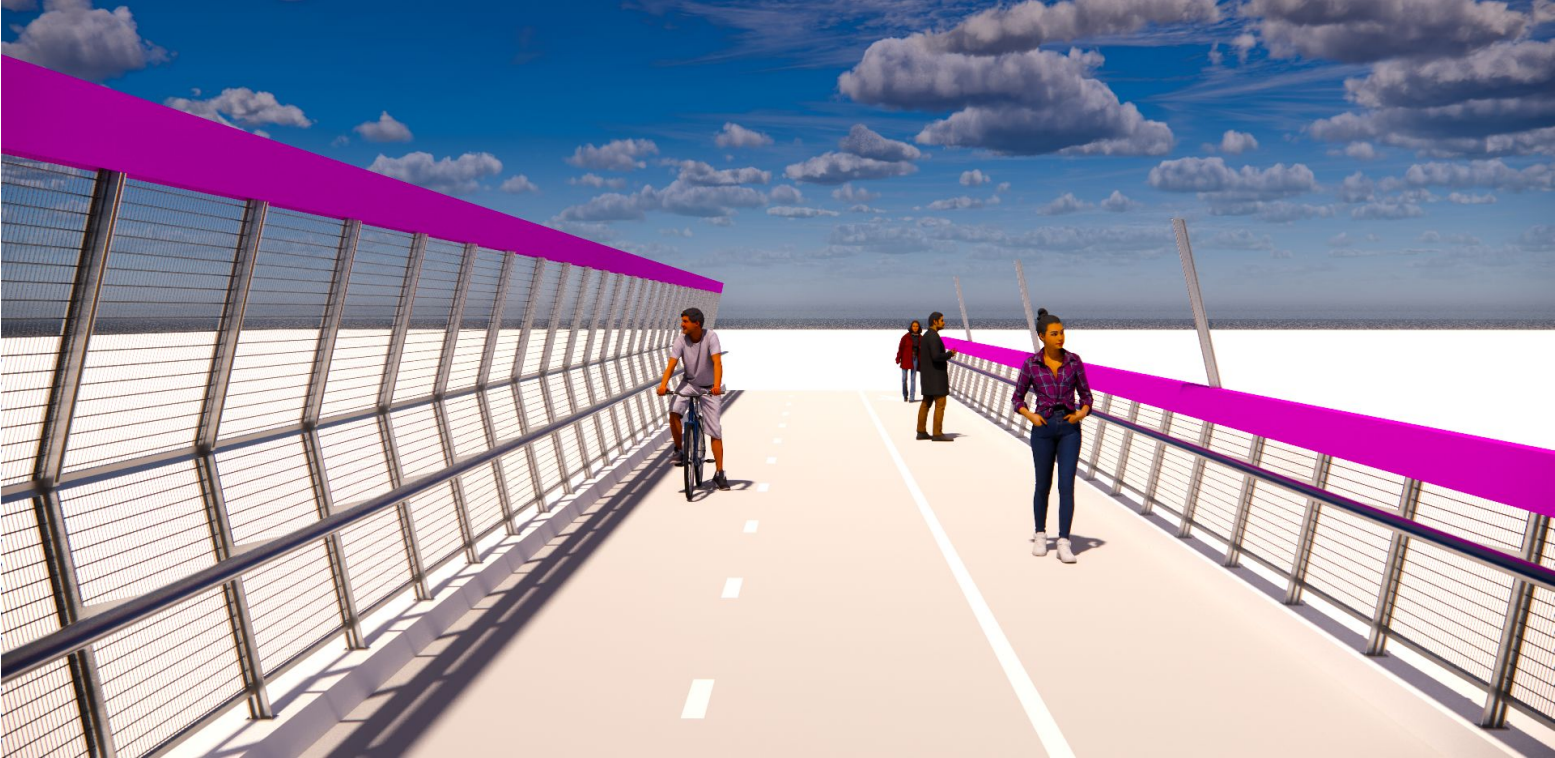
# Railing Color



No Color Rail

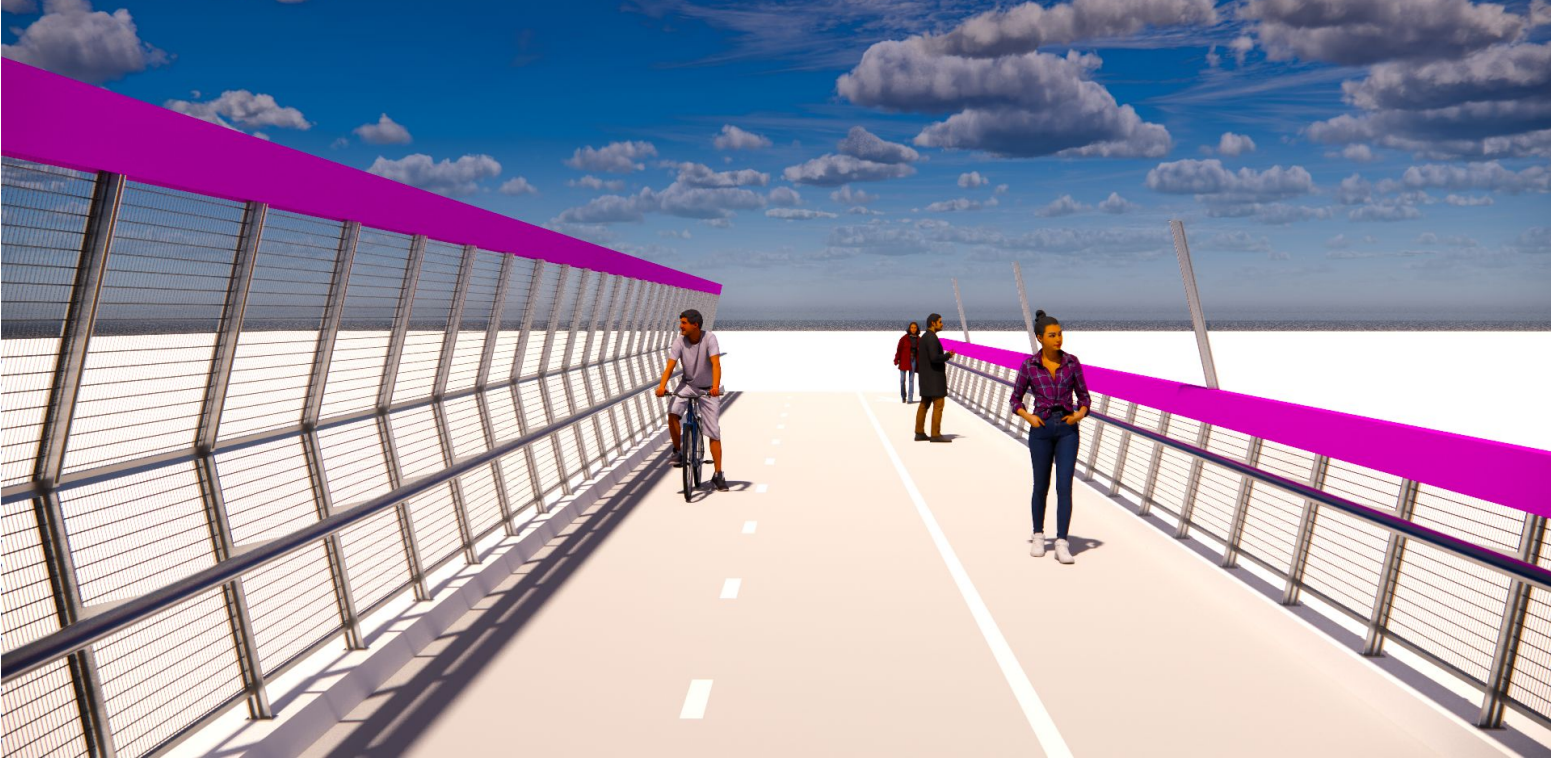


# Railing Color



Painted top rail

# Railing Color



Painted top rail and mesh

# Railing Color



Painted top rail and post

# Railing Color



No color rail



Painted top rail



Painted top rail and mesh



Painted top rail and post



COMMUNITY DESIGN REVIEW

APRIL 9, 2024



TYLin

# Off Structure Ground Plane



West Oakland  
Environmental  
Indicators  
Project



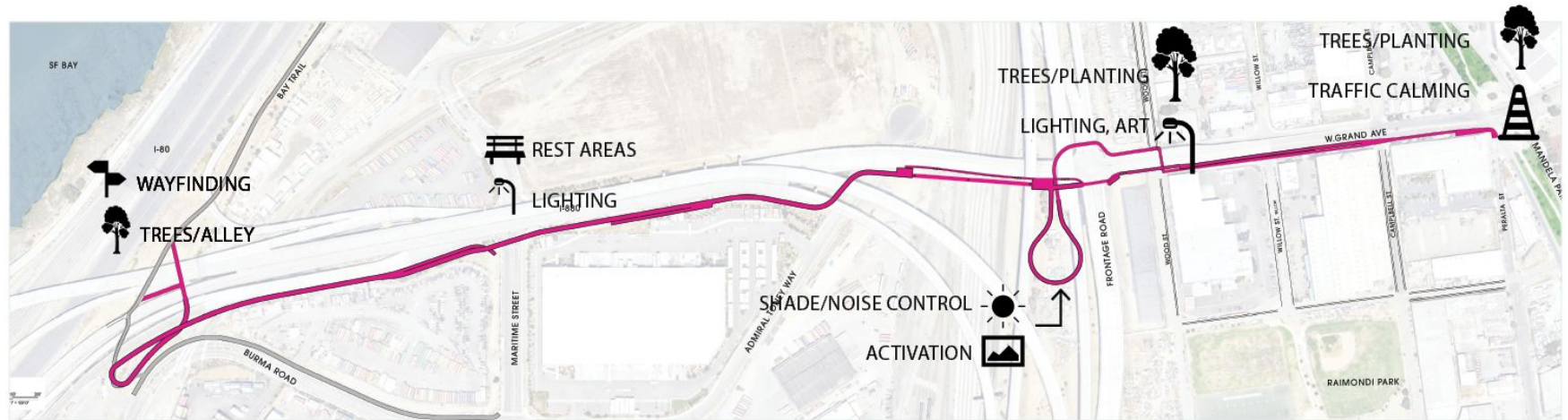
COMMUNITY DESIGN REVIEW

APRIL 9, 2024



TYLin

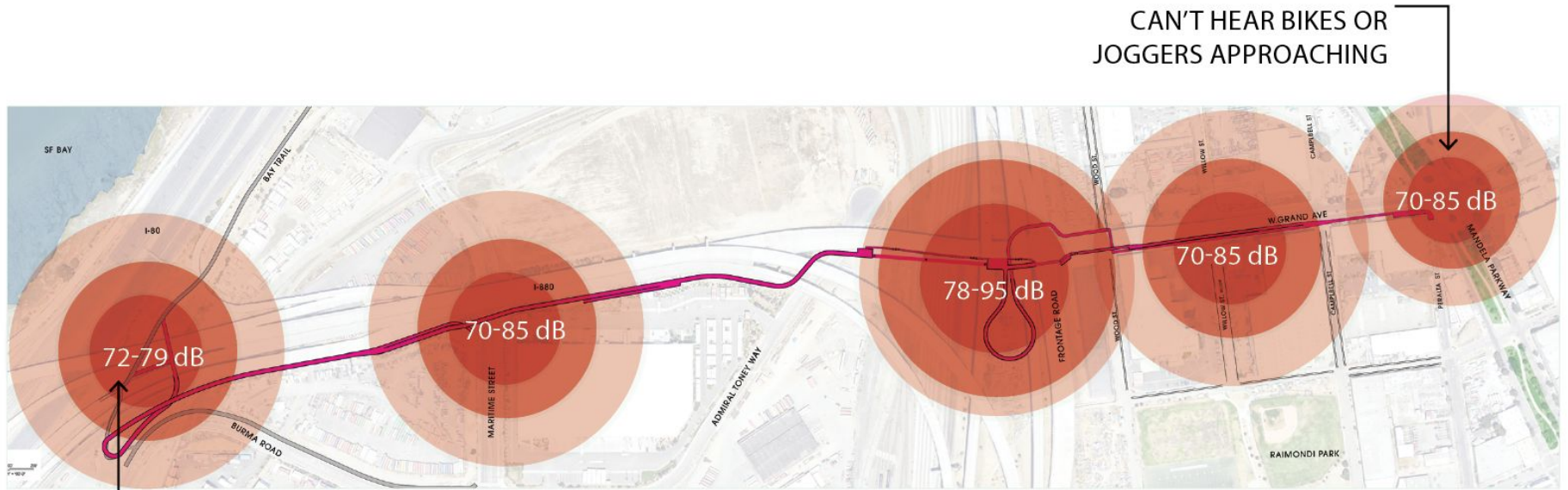
# COMMUNITY FEEDBACK: LOCATION SPECIFIC



## COMMUNITY PROCESS



# COMMUNITY FEEDBACK: MAPPING SOUND DECIBELS (dB)



CAN'T HEAR BIKES OR JOGGERS APPROACHING

CAN'T HEAR BIKES OR JOGGERS APPROACHING

0-70 dB SAFE LEVELS  
71-120 dB UNSAFE LEVELS  
120-140 dB CAN CAUSE PAIN

# STREET ART IS SAFETY!



50% DECREASE IN  
RATE OF CRASHES  
WITH PED/CYCLISTS



EXAMPLE OF COST:  
MATERIALS: \$4,000  
DESIGN FEE: \$1,000  
LABOR: (VOLUNTEER)



# UNIFYING DESIGN ELEMENTS ON STRUCTURE + OFF STRUCTURE

## MAKE IT DIFFERENT THAN THE FREEWAY

- COLOR DIFFERENTIATES THE BIKE PATH
- SIGNATURE VERTICAL ELEMENTS—SAME ON STRUCTURE AND OFF STRUCTURE
- PERFORATED SCREENS COULD MOVE ONTO THE GROUND
- CURVING SHAPES (NOT FREEWAY TRAPEZOIDS)

## CREATE HUMAN SCALED PLACES

- FURNITURE
- COZINESS
- HUMAN SCALE LIGHTING



RAILING COLOR OR MATERIAL CAN BE UTILIED IN THE GROUND FURNISHINGS



GATEWAY COLUMN (TO MATCH BRIDGE CHARACTER)

# DESIGN: KIT OF PARTS | GROUND

## 1. PAINT: WAYFINDING



LOCAL ARTISTS. AFFORDABLE. PROGRAM

## 2. LIGHTING: SAFETY



VISIBILITY AND SAFETY, HUMAN SCALE

## 3. ECOLOGY



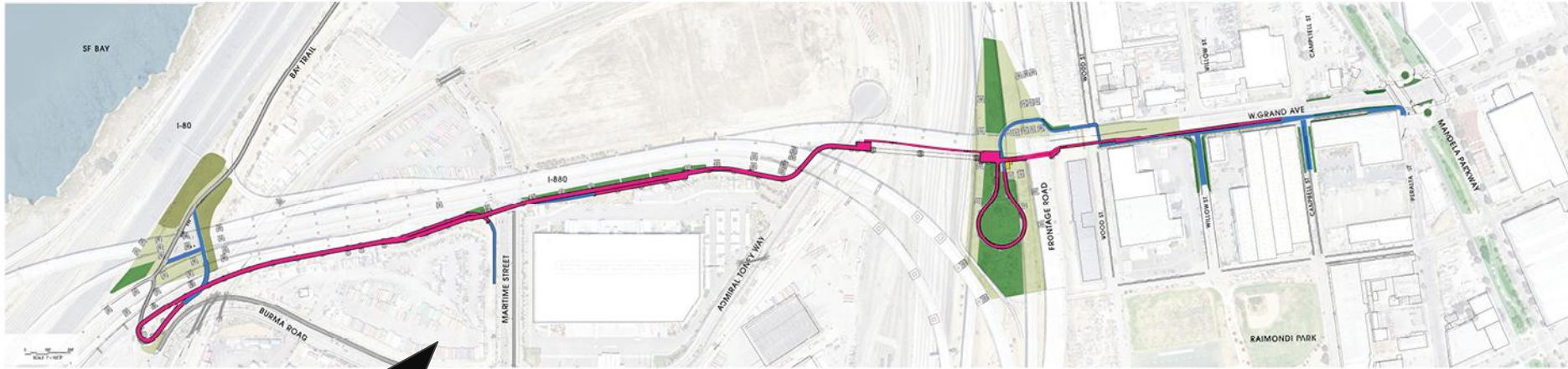
WAYFINDING, BEAUTIFICATION

## 3. MOSAIC: GATEWAYS



LITHOMOSAIC AT STARTING POINTS

# PLANTING OPPORTUNITIES

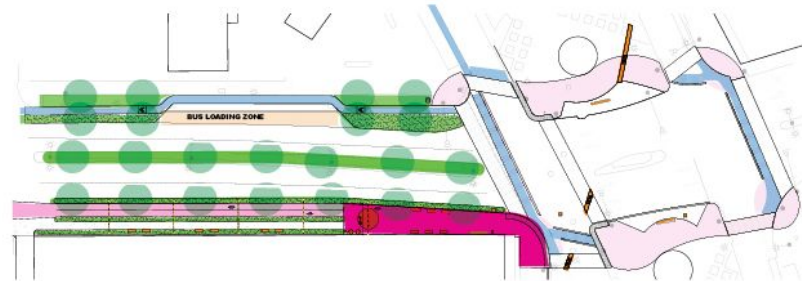


WE WERE ASKED  
WHERE PLANTING IS  
ALLOWED AND WHY.

## LEGEND

- ON GRADE
- ON STRUCTURE
- STAIR + ELEVATOR LOCATION
- TREES POSSIBLE
- LOW PLANTING
- MARSH OR BIOSWALE PLANTING

# MANDELA X WEST GRAND | 2 OPTIONS



## PLAZA ON THE CORNER

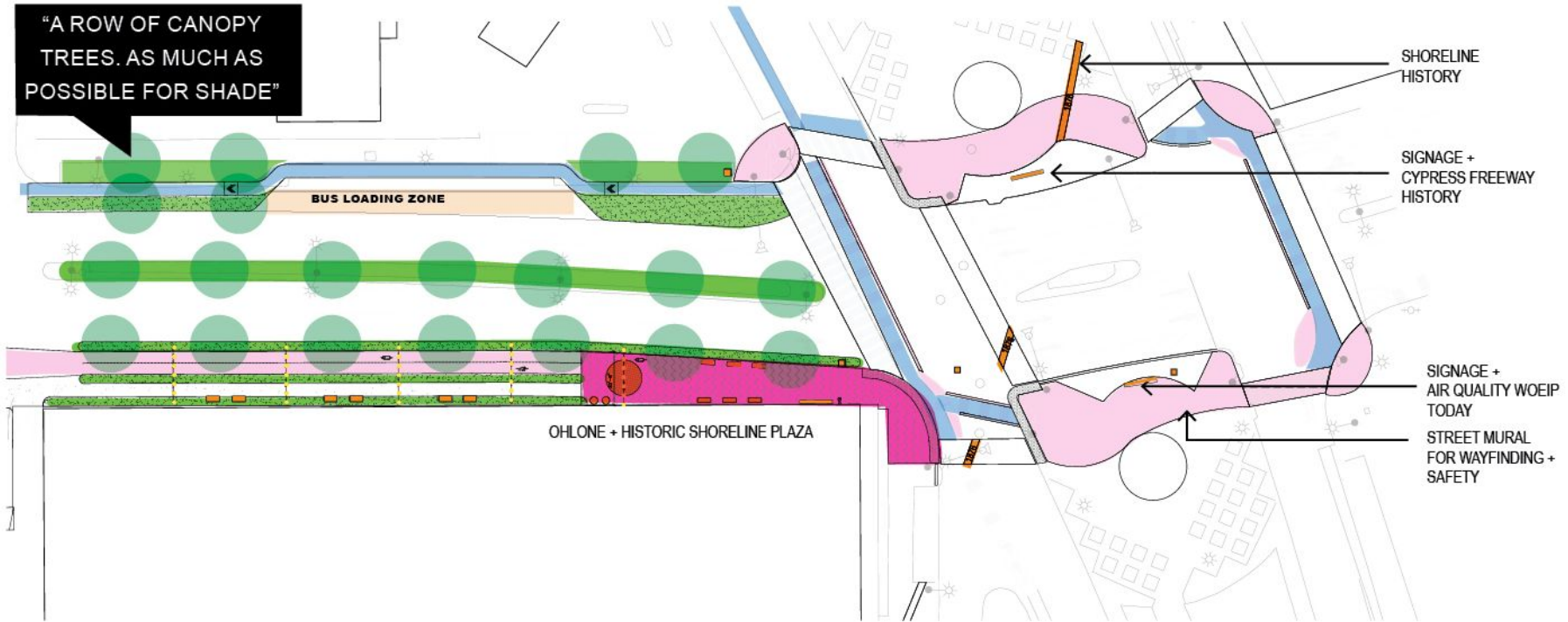
- PLAZA ON THE CORNER HOSTS AMMENITIES AND WAYFINDING FOR THE START OF THE TRAIL
- RAISED BIKE LANE SIDEWALK LEVEL
- NEW TREES AND PLANTING STRIP
- PROTECTED BIKE LANE NORTH W. GRAND
- WIDER SIDEWALK



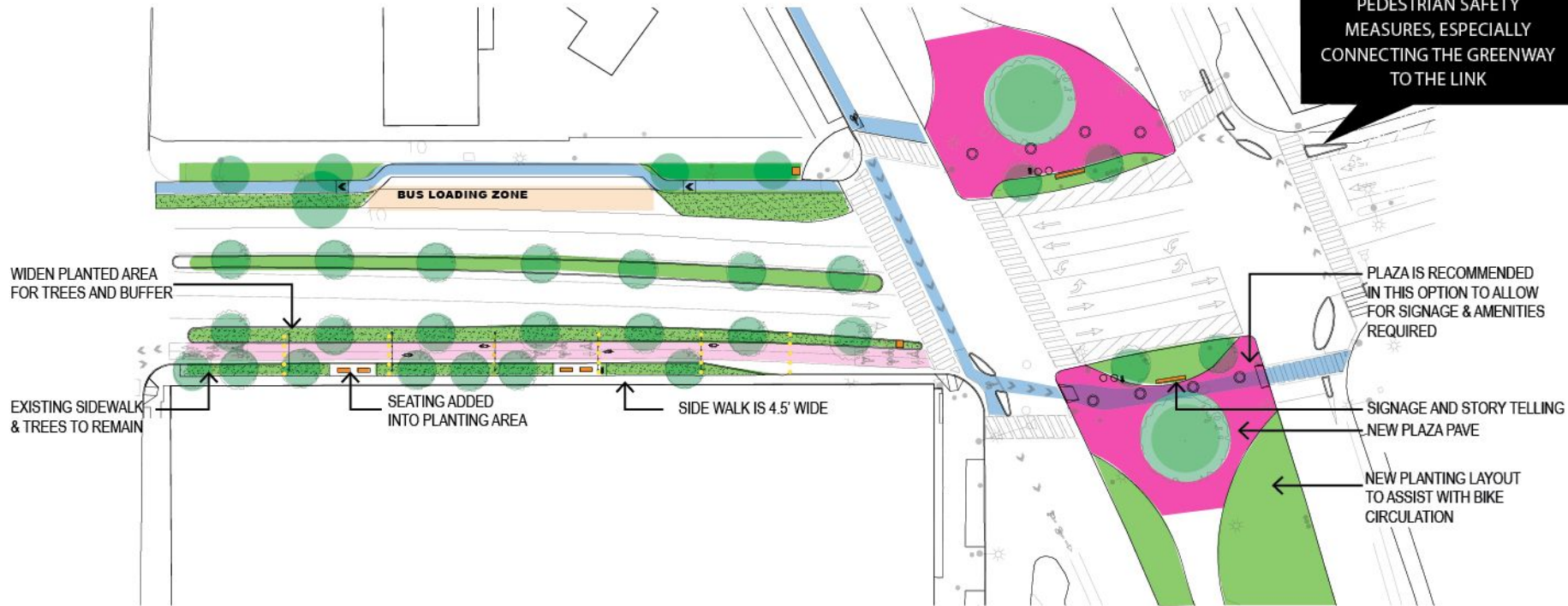
## BAY BRIDGE FORWARD HYBRID

- PLAZA IN THE MIDDLE OF MANDELA
- EXISTING BIKE LANE IS STREET LEVEL
- EXISTING SIDEWALK + TREES
- REQUIRES UPDATED PLANTING STRIP TO ACCOMMODATE TREES
- PROTECTED BIKE LANE NORTH W. GRAND

# MANDELA PLAN PREFERRED



# MANDELA BAY BRIDGE FORWARD HYBRID :



0 20' 40' 80'  
SCALE: 1" = 40'-0"



West Oakland  
Environmental  
Indicators  
Project



DESIGN PROGRESS SHARE BACK #1

APRIL 9, 2024



METROPOLITAN  
TRANSPORTATION  
COMMISSION



TYlin

# MANDELA PARKWAY VIEW | BAY BRIDGE FORWARD HYBRID



West Oakland  
Environmental  
Indicators  
Project



DESIGN PROGRESS SHARE BACK #1

APRIL 9, 2024



METROPOLITAN  
TRANSPORTATION  
COMMISSION



TYLin

# MANDELA + W. GRAND VIEWS | BAY BRIDGE FORWARD HYBRID



GATEWAY SIGN AND BIKE LANE COLOR HELP WITH WAYFINDING. BAY BRIDGE FORWARD'S PLAN THE BIKE LANES ARE STREET LEVEL.



PLANTING BUFFER BETWEEN THE STREET WOULD NEED TO BE WIDENED, BIKE SURFACE TREATMENT AND FURNISHING WOULD BE NEW



# MANDELA PARKWAY VIEW | PREFERRED PLAN



West Oakland  
Environmental  
Indicators  
Project



DESIGN PROGRESS SHARE BACK #1

APRIL 9, 2024



METROPOLITAN  
TRANSPORTATION  
COMMISSION



TYLin

# AERIAL VIEW OF WEST GRAND FROM MANDELA

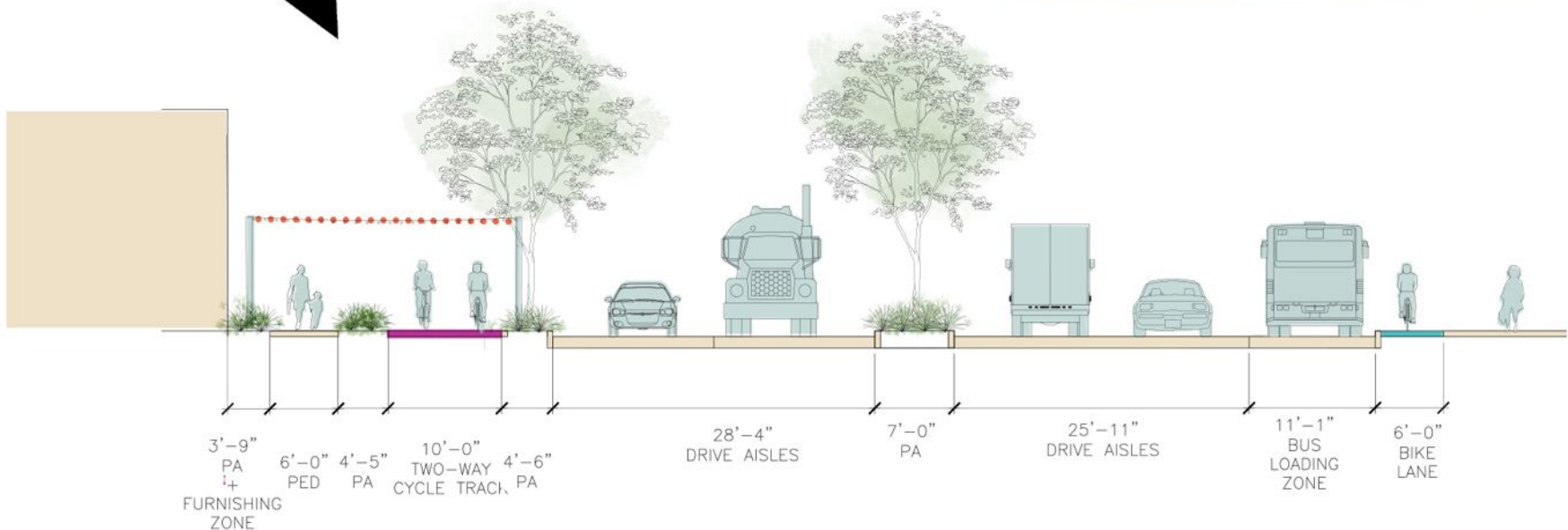


# VIEW TOWARDS WEST GRAND ALLEY



# SECTION RECOMMENDED

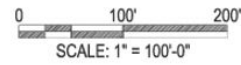
"A ROW OF CANOPY TREES AS MUCH AS POSSIBLE FOR SHADE"



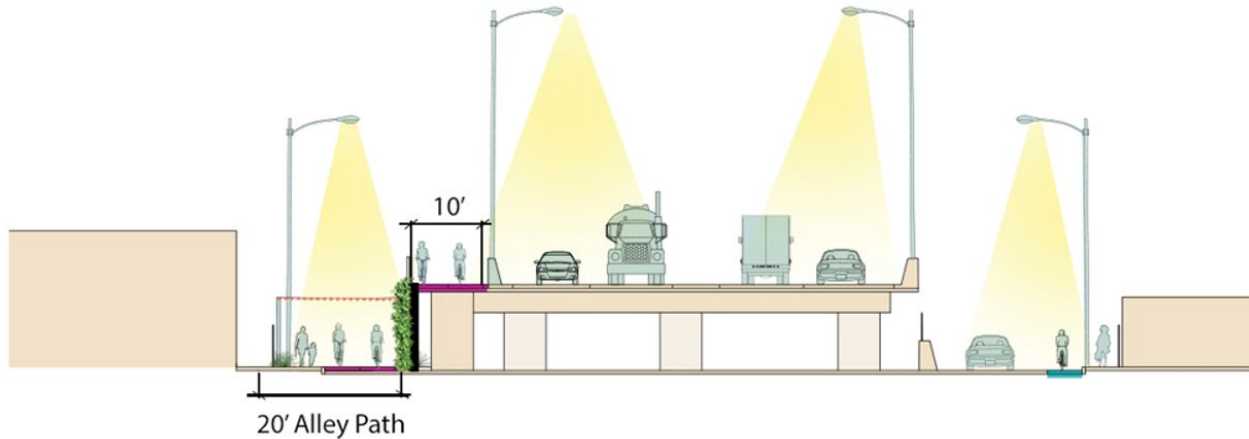
# WEST GRAND ALLEY PLAN



PED SCALE LIGHTING



# WEST GRAND ALLEY + TUNNEL RD



"LIGHTING, LIGHTING, LIGHTING, ESPECIALLY AT UNDERPASS AND IMPORTANT GATEWAYS"

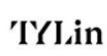


SECTION CUT OF WEST GRAND ALLEY



DESIGN PROGRESS SHARE BACK #1

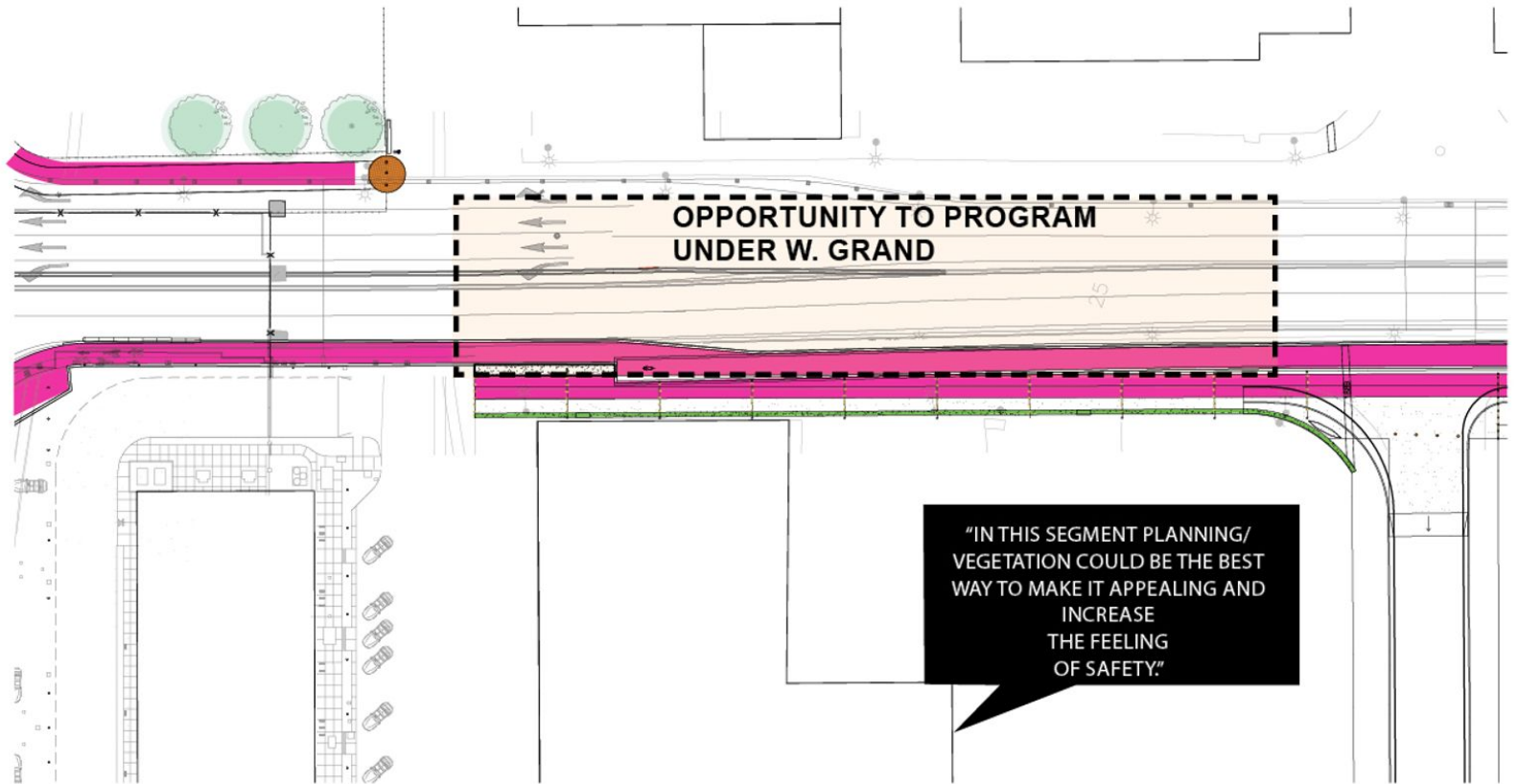
APRIL 9 2024



# VIEW LOOKING TOWARDS TUNNEL ROAD



# WEST GRAND ALLEY + TUNNEL RD ENLARGEMENT

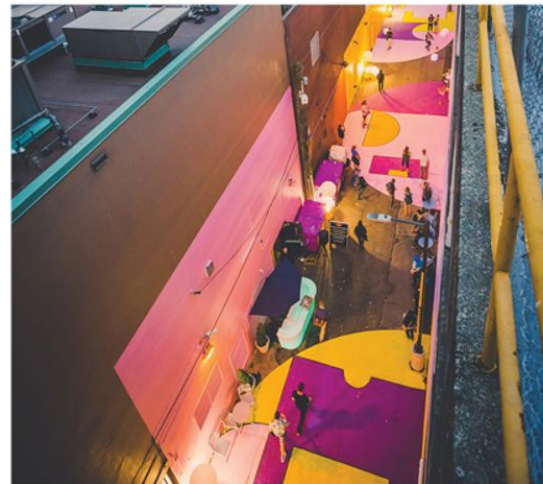




# WALL OFF WEST GRAND AVE | ART WALL



LOOKING TOWARD MANDELA FROM TUNNEL ROAD



West Oakland  
Environmental  
Indicators  
Project



DESIGN PROGRESS SHARE BACK #1

APRIL 9, 2024



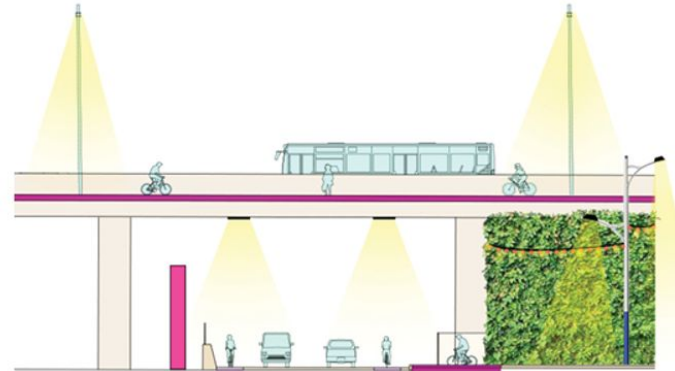
METROPOLITAN  
TRANSPORTATION  
COMMISSION



# WALL OFF WEST GRAND AVE | VINE WALL



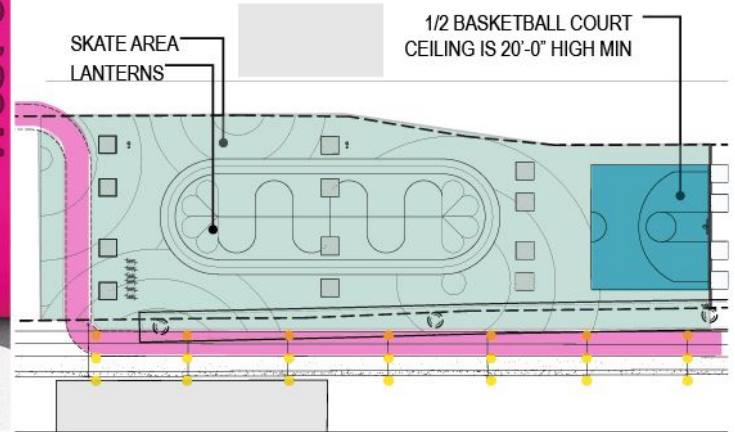
LOOKING TOWARD MANDELA FROM TUNNEL ROAD



ELEVATION OF TUNNEL ROAD UNDERPASS



# OPEN UP UNDER WEST GRAND AVE | SKATE AND BASKETBALL



# OPEN UP UNDER WEST GRAND AVE | SKATE AND BASKETBALL



West Oakland  
Environmental  
Indicators  
Project



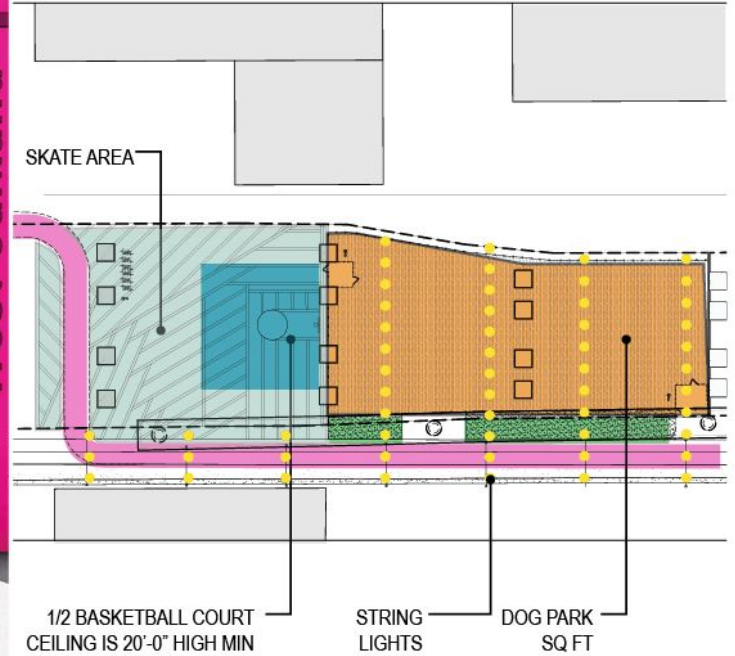
COMMUNITY DESIGN REVIEW

APRIL 9, 2024



TYLin

# UNDER WEST GRAND AVE | DOG PARK AND BASKETBALL



West Oakland  
Environmental  
Indicators  
Project



COMMUNITY DESIGN REVIEW

APRIL 9, 2024



TYLin

# UNDER WEST GRAND AVE | DOG PARK AND BASKETBALL



# Questions



West Oakland  
Environmental  
Indicators  
Project



COMMUNITY DESIGN REVIEW

APRIL 9, 2024

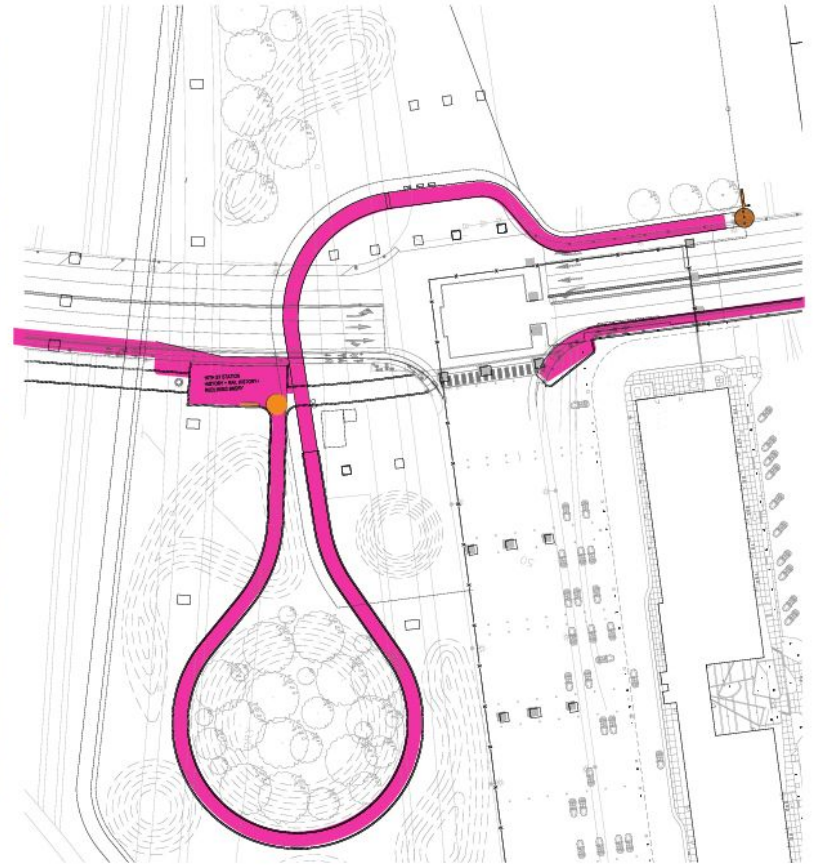


TYLin

# FRONTAGE LOOP



“HOW DO WE CREATE A CENTER GEM OF THE PROJECT FOR NOT ONLY TRANSPORTATION BUT ALSO PEOPLE FOCUSED SPACE IN A FAIRLY SIGNIFICANT OPEN SPACE LOCATED AT THE HEART OF THIS PROJECT?”



West Oakland  
Environmental  
Indicators  
Project



DESIGN PROGRESS SHARE BACK #1

APRIL 9, 2024



TYLin



# FRONTAGE LOOP PLANTING

- LEGEND**
- TREE OPPORTUNITY
  - LOW PLANTING
  - NO PLANTING

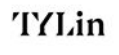


# VIEW FROM WOOD ST. TOWARDS WOL LOOP



COMMUNITY DESIGN REVIEW

APRIL 9, 2024



# FRONTAGE LOOP ELEVATED PATH



West Oakland  
Environmental  
Indicators  
Project



COMMUNITY DESIGN REVIEW

APRIL 9, 2024



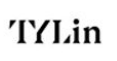
TYLin

# VIEW OF THE FRONTAGE LOOP LOOKING NORTH



DESIGN PROGRESS SHARE BACK #1

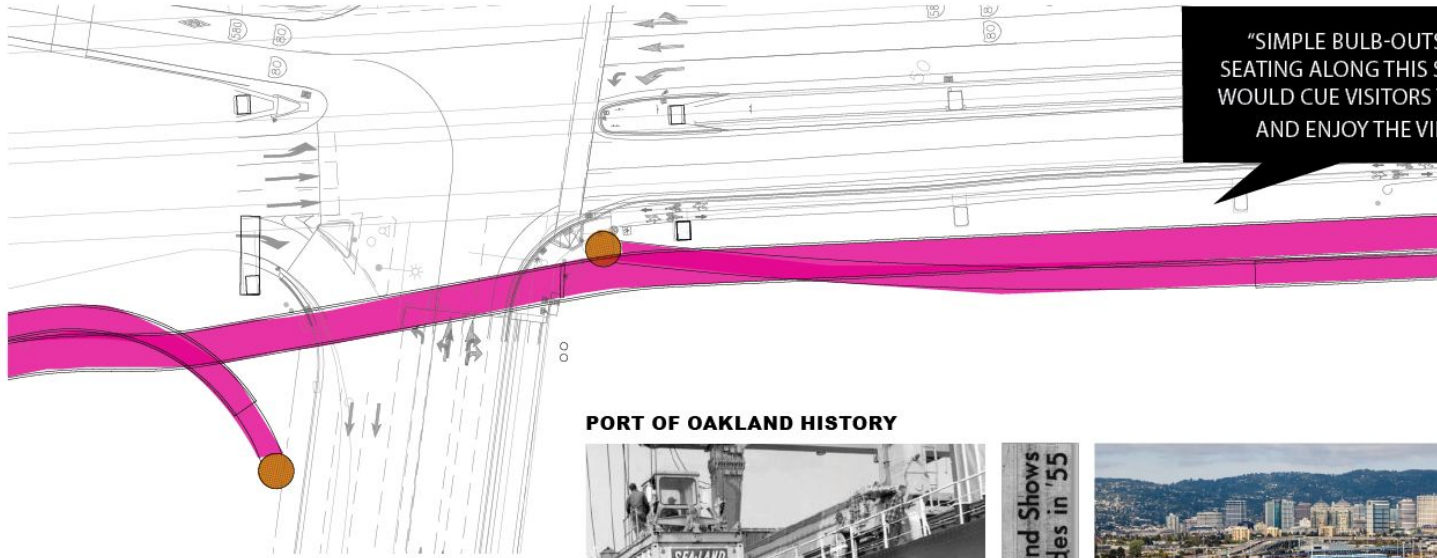
APRIL 9, 2024



# VIEW OF THE FRONTAGE LOOP LOOKING SOUTH



# PLAN + COMMENTS



"SIMPLE BULB-OUTS WITH SEATING ALONG THIS SEGMENT WOULD CUE VISITORS TO PAUSE AND ENJOY THE VIEWS."

## PORT OF OAKLAND HISTORY



Port of Oakland Shows Definite Strides in '55



THE PORT OF OAKLAND WAS ESTABLISHED IN 1927 AND IN 1960 BECAME THE FIRST MAJOR PORT ON THE WEST COAST TO BUILD TERMINALS FOR THE THEN-REVOLUTIONARY CONTAINER SHIPS.

OAKLAND SEAPORT HANDLES 99% OF CONTAINERIZED CARGO FOR NORTHERN CALIFORNIA MAKING IT THE NINTH BUSIEST CONTAINER PORT IN THE COUNTRY

# THE TOUCH DOWN PLAN

"SIGNAGE- IT IS VERY EASY TO GET LOST HERE AND THE CURRENT PATH SPLITTING OFF FROM THE BAY BRIDGE TRAIL IS VERY EASY TO MISS."



## AMENITIES

- WATER FOUNTAIN
- CALL BOX
- BIKE RACKS
- SIGNAGE
- TABLE + ADA TABLE
- BENCH
- LIGHT POSTS



WATER PATTERN GOBO LIGHTS



SEA SHELL CONCRETE



INTERACTIVE PAINTED ART



West Oakland  
Environmental  
Indicators  
Project



COMMUNITY DESIGN REVIEW

APRIL 9, 2024



TYLin

# VIEW AT THE TOUCHDOWN



"TREES  
WHERE POSSIBLE, PUT GARDENS  
WHERE TREES MAY NOT BE  
VIABLE. A FOCUS ON NATIVE  
SPECIES IS ALWAYS A BIG PLUS  
WITH THESE  
KIND OF PLANTED AREAS."



# VIEWS OF TOUCHDOWN CONNECTING TO BAY TRAIL



# VIEWS OF TOUCHDOWN



Phase 1

SEP 12 2023	OCT 10 2023	OCT 17 2023	OCT 24 2023	NOV 7 2023
Community Engagement Kick-Off	Design Meeting #1 -Design Detail -Elements	Design Focus Meeting #2 -Environmental Justice -Air pollution -Public health	Design Focus Meeting #3 -Streetscape -Intersections -Traffic Safety	Design Focus Meeting #4 -Place making -Design -Historical resources

## Next Event: Apr. 23 In Person

West Oakland Link Open House  
5PM-7:30PM  
DeFremery Recreation Center, Oakland, CA 94607

To stay tuned for further events join this mailing list  
<http://mtc.ca.gov/west-oakland-link>



# West Oakland Link Timeline

Engagement Opportunities  
Community Input Journey

For Schedule Updates  
Visit <https://mtc.ca.gov/west-oakland-link>

Phase 2	Phase 3	Phase 4
APR 9 2024	APR 23 2024	SEP TBD 2024
MAR TBD 2025		
Design Update Meeting	Design Update Open House	Design Update Meeting
		Design Update & Pre-Construction Phase Meeting

**Are there other organizations or people we should contact?**